

Bioactive

HuPro®

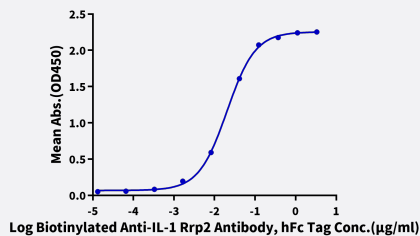
IL1RL2 (Human) Recombinant Protein

Catalog # P9896

Size 100 ug

Applications

Human IL-1 Rrp2, hFc Tag ELISA
0.1 µg Human IL-1 Rrp2, hFc Tag Per Well



Enzyme-linked Immunoabsorbent Assay

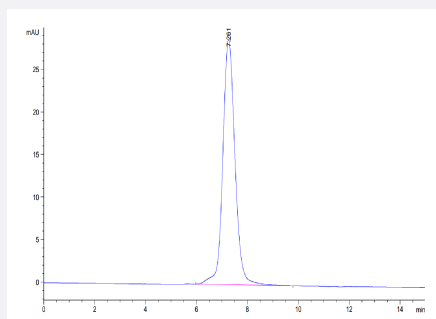
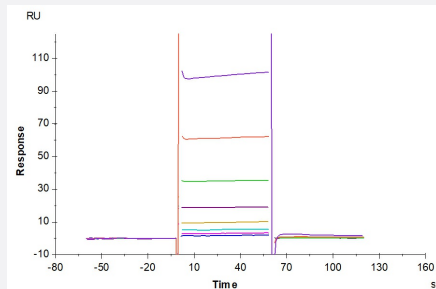
Immobilized Human IL-1 Rrp-2, hFc Tag at 1 ug/mL (100 uL/well) on the plate. Dose response curve for Biotinylated Anti-IL-1 Rrp-2 Antibody, hFc Tag with the EC50 of 20.9 ng/mL determined by ELISA (QC Test).

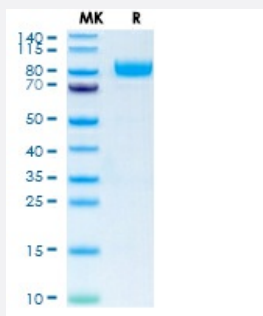
Surface Plasmon Resonance

Human IL-1 Rrp-2, hFc Tag captured on CM5 Chip via Protein A can bind Human IL-1F10, His Tag with an affinity constant of 35.38 uM as determined in SPR assay (Biacore T200).

SEC-HPLC

The purity of Human IL-1 Rrp2 is greater than 95% as determined by SEC-HPLC.





Tris-Bis PAGE

Human IL-1 Rrp2 on Tris-Bis PAGE under reduced condition. The purity is greater than 95%.

Specification

Product Description	Human IL1RL2 (Q9HB29-1, Asp20-Arg335) partial recombinant protein with hFc tag at C-Terminus expressed in HEK293 cells.
Sequence	Asp20-Arg335
Host	Human
Theoretical MW (kDa)	62.6
Form	Lyophilized
Preparation Method	Mammalian cell (HEK293) expression system
Purity	> 95% as determined by Tris-Bis PAGE; > 95% as determined by HPLC
Endotoxin Level	< 1 EU per 1 ug of protein (determined by LAL method)
Activity	The EC ₅₀ was 20.9 ng/mL, measured by ELISA at 1 ug/mL. The affinity constant of 35.38 uM as determined in SPR assay (Biacore T200).
Quality Control Testing	SEC-HPLC and Tris-Bis PAGE SEC-HPLC The purity of Human IL-1 Rrp2 is greater than 95% as determined by SEC-HPLC. Tris-Bis PAGE Human IL-1 Rrp2 on Tris-Bis PAGE under reduced condition. The purity is greater than 95%.
Recommend Usage	Biological Activity ELISA SDS-PAGE SPR The optimal working dilution should be determined by the end user.
Storage Buffer	Lyophilized from sterile distilled Water is > 100 ug/mL
Storage Instruction	Store at 2°C to 8°C for 1 week. For long term storage, aliquot and store at -20°C to -80°C. Aliquot to avoid repeated freezing and thawing.
Note	Result of bioactivity analysis

Applications

- Enzyme-linked Immunoabsorbent Assay

Immobilized Human IL-1 Rrp-2, hFc Tag at 1 ug/mL (100 uL/well) on the plate. Dose response curve for Biotinylated Anti-IL-1 Rrp-2 Antibody, hFc Tag with the EC50 of 20.9 ng/mL determined by ELISA (QC Test).

- Functional Study

- SDS-PAGE

- Surface Plasmon Resonance

Human IL-1 Rrp-2, hFc Tag captured on CM5 Chip via Protein A can bind Human IL-1F10, His Tag with an affinity constant of 35.38 uM as determined in SPR assay (Biacore T200).

Gene Info — IL1RL2

Entrez GeneID [8808](#)

Protein Accession# [Q9HB29-1](#)

Gene Name IL1RL2

Gene Alias IL1R-rp2, IL1RRP2

Gene Description interleukin 1 receptor-like 2

Omim ID [604512](#)

Gene Ontology [Hyperlink](#)

Gene Summary The protein encoded by this gene is a member of the interleukin 1 receptor family. An experiment with transient gene expression demonstrated that this receptor was incapable of binding to interleukin 1 alpha and interleukin 1 beta with high affinity. This gene and four other interleukin 1 receptor family genes, including interleukin 1 receptor, type I (IL1R1), interleukin 1 receptor, type II (IL1R2), interleukin 1 receptor-like 1 (IL1RL1), and interleukin 18 receptor 1 (IL18R1), form a cytokine receptor gene cluster in a region mapped to chromosome 2q12. [provided by RefSeq]

Other Designations interleukin-1 receptor-related protein 2

Disease

- [Genetic Predisposition to Disease](#)

- [Hematologic Diseases](#)
- [Intervertebral Disk Displacement](#)
- [Kidney Failure](#)
- [Occupational Diseases](#)
- [Osteoarthritis](#)