

Bioactive

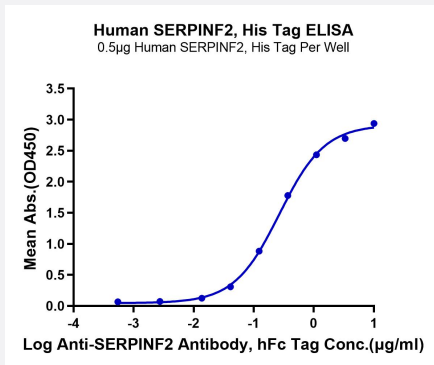
HuPro®

SERPINF2 (Human) Recombinant Protein

Catalog # P9890

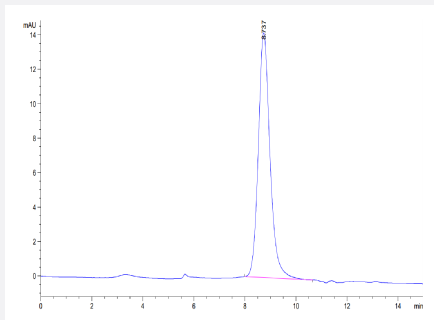
Size 100 ug

Applications



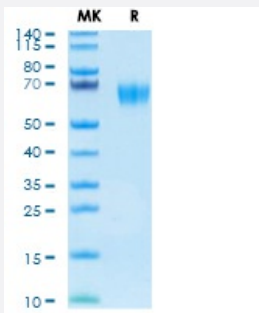
Enzyme-linked Immunoabsorbent Assay

Immobilized Human SERPINF2, His Tag at 5 ug/mL (100 uL/well) on the plate. Dose response curve for Anti-SERPINF2 Antibody, hFc Tag with the EC₅₀ of 0.27 ug/mL determined by ELISA.



SEC-HPLC

The purity of Human SERPINF2 is greater than 90% as determined by SEC-HPLC.



Tris-Bis PAGE

Human SERPINF2 on Tris-Bis PAGE under reduced condition. The purity is greater than 95%.

Specification

Product Description	Human SERPINF2 (P08697-1, Met28-Lys491) partial recombinant protein with His tag at C-Terminus expressed in HEK293 cells.
Sequence	Met28-Lys491
Host	Human
Theoretical MW (kDa)	52.9
Form	Lyophilized
Preparation Method	Mammalian cell (HEK293) expression system
Purity	> 95% as determined by Tris-Bis PAGE; > 95% as determined by HPLC
Endotoxin Level	< 1 EU per 1 ug of protein (determined by LAL method)
Activity	The EC ₅₀ was 0.27 ug/mL, measured by ELISA at 5 ug/mL.
Quality Control Testing	SEC-HPLC and Tris-Bis PAGE SEC-HPLC The purity of Human SERPINF2 is greater than 90% as determined by SEC-HPLC. Tris-Bis PAGE Human SERPINF2 on Tris-Bis PAGE under reduced condition. The purity is greater than 95%.
Recommend Usage	Biological Activity ELISA SDS-PAGE The optimal working dilution should be determined by the end user.
Storage Buffer	Lyophilized from sterile distilled Water is > 100 ug/mL
Storage Instruction	Store at 2°C to 8°C for 1 week. For long term storage, aliquot and store at -20°C to -80°C. Aliquot to avoid repeated freezing and thawing.
Note	Result of bioactivity analysis

Applications

- Enzyme-linked Immunoabsorbent Assay

Immobilized Human SERPINF2, His Tag at 5 ug/mL (100 uL/well) on the plate. Dose response curve for Anti-SERPINF2 Antibody, hFc Tag with the EC₅₀ of 0.27 ug/mL determined by ELISA.

- Functional Study

- SDS-PAGE

Gene Info — SERPINF2

Entrez GeneID	5345
Protein Accession#	P08697-1
Gene Name	SERPINF2
Gene Alias	A2AP, AAP, ALPHA-2-PI, API, PLI
Gene Description	serpin peptidase inhibitor, clade F (alpha-2 antiplasmin, pigment epithelium derived factor), member 2
Omim ID	262850
Gene Ontology	Hyperlink
Gene Summary	This gene encodes a member of the serpin family of serine protease inhibitors. The protein is a major inhibitor of plasmin, which degrades fibrin and various other proteins. Consequently, the proper function of this gene has a major role in regulating the blood clotting pathway. Mutations in this gene result in alpha-2-plasmin inhibitor deficiency, which is characterized by severe hemorrhagic diathesis. Multiple transcript variants encoding different isoforms have been found for this gene. [provided by RefSeq]
Other Designations	alpha-2-antiplasmin alpha-2-plasmin inhibitor serine (or cysteine) proteinase inhibitor, clade F (alpha-2 antiplasmin, pigment epithelium derived factor), member 2

Pathway

- [Complement and coagulation cascades](#)

Disease

- [Alzheimer disease](#)
- [Cardiovascular Diseases](#)
- [Diabetes Mellitus](#)
- [Edema](#)
- [Genetic Predisposition to Disease](#)
- [Kidney Failure](#)