

Bioactive

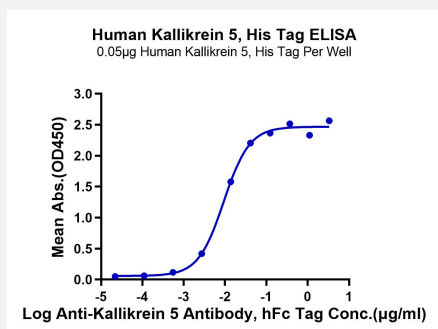
HuPro®

KLK5 (Human) Recombinant Protein

Catalog # P9846

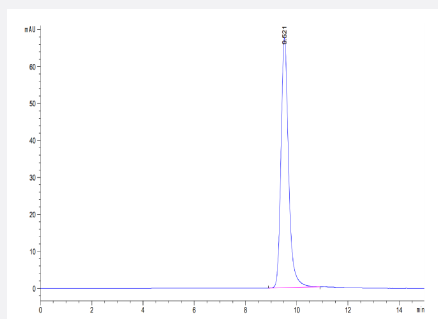
Size 100 ug

Applications



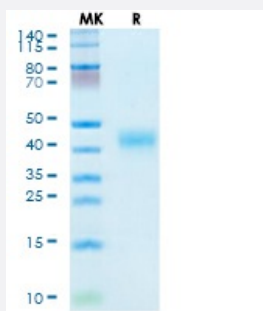
Enzyme-linked Immunoabsorbent Assay

Immobilized Human Kallikrein 5, His Tag at 0.5 ug/mL (100 uL/Well) on the plate. Dose response curve for Anti-Kallikrein 5 Antibody, hFc Tag with the EC50 of 9.4 ng/mL determined by ELISA.



SEC-HPLC

The purity of Human Kallikrein 5 is greater than 95% as determined by SEC-HPLC.



Tris-Bis PAGE

Human Kallikrein 5 on Tris-Bis PAGE under reduced condition. The purity is greater than 95%.

Specification

Product Description

Human KLK5 (Q9Y337, Val23-Ser293) partial recombinant protein with His tag at C-Terminus expressed in HEK293 cells.

Sequence	Val23-Ser293
Host	Human
Theoretical MW (kDa)	30.7
Form	Lyophilized
Preparation Method	Mammalian cell (HEK293) expression system
Purity	> 95% as determined by Tris-Bis PAGE; > 95% as determined by HPLC
Endotoxin Level	< 1 EU per 1 ug of protein (determined by LAL method)
Activity	The EC ₅₀ was 16.8 ng/mL, measured by ELISA at 1 ug/mL.
Quality Control Testing	SEC-HPLC and Tris-Bis PAGE SEC-HPLC The purity of Human Kallikrein 5 is greater than 95% as determined by SEC-HPLC. Tris-Bis PAGE Human Kallikrein 5 on Tris-Bis PAGE under reduced condition. The purity is greater than 95%.
Recommend Usage	Biological Activity ELISA SDS-PAGE The optimal working dilution should be determined by the end user.
Storage Buffer	Lyophilized from sterile distilled Water is > 100 ug/mL
Storage Instruction	Store at 2°C to 8°C for 1 week. For long term storage, aliquot and store at -20°C to -80°C. Aliquot to avoid repeated freezing and thawing.
Note	Result of bioactivity analysis

Applications

- Enzyme-linked Immunoabsorbent Assay

Immobilized Human Kallikrein 5, His Tag at 0.5 ug/mL (100 uL/Well) on the plate. Dose response curve for Anti-Kallikrein 5 Antibody, hFc Tag with the EC₅₀ of 9.4 ng/mL determined by ELISA.

- Functional Study

- SDS-PAGE

Gene Info — KLK5

Entrez GeneID	25818
Protein Accession#	Q9Y337
Gene Name	KLK5
Gene Alias	KLK-L2, KLKL2, SCTE
Gene Description	kallikrein-related peptidase 5
Omim ID	605643
Gene Ontology	Hyperlink
Gene Summary	<p>Kallikreins are a subgroup of serine proteases having diverse physiological functions. Growing evidence suggests that many kallikreins are implicated in carcinogenesis and some have potential as novel cancer and other disease biomarkers. This gene is one of the fifteen kallikrein subfamily members located in a cluster on chromosome 19. Its expression is up-regulated by estrogens and progestins. The encoded protein is secreted and may be involved in desquamation in the epidermis. Alternative splicing results in multiple transcript variants encoding the same protein. [provided by RefSeq]</p>
Other Designations	kallikrein 5 kallikrein-like protein 2 stratum corneum tryptic enzyme

Disease

- [Genetic Predisposition to Disease](#)
- [Prostatic Neoplasms](#)