

Bioactive

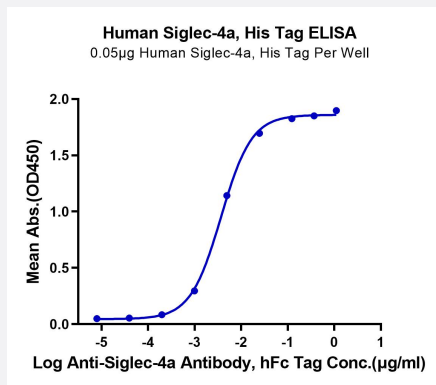
HuPro®

MAG (Human) Recombinant Protein

Catalog # P9838

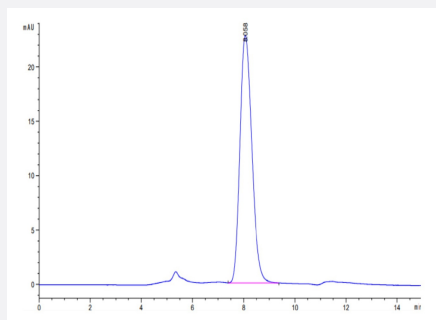
Size 100 ug

Applications



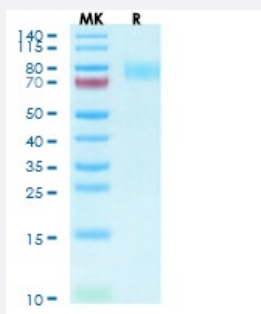
Enzyme-linked Immunoabsorbent Assay

Immobilized Human Siglec-4a, His Tag at 0.5 ug/mL (100 uL/well) on the plate. Dose response curve for Anti-Siglec-4a Antibody, hFc Tag with the EC50 of 3.7 ng/mL determined by ELISA.



SEC-HPLC

The purity of Human Siglec-4a is greater than 95% as determined by SEC-HPLC.



Tris-Bis PAGE

Human Siglec-4a on Tris-Bis PAGE under reduced condition. The purity is greater than 95%.

Specification

Product Description	Human MAG (P20916, Gly20-Pro516) partial recombinant protein with His tag at C-Terminus expressed in HEK293 cells.
Sequence	Gly20-Pro516
Host	Human
Theoretical MW (kDa)	55.8
Form	Lyophilized
Preparation Method	Mammalian cell (HEK293) expression system
Purity	> 95% as determined by Tris-Bis PAGE; > 95% as determined by HPLC
Endotoxin Level	< 1 EU per 1 ug of protein (determined by LAL method)
Activity	The EC ₅₀ was 3.7 ng/mL, measured by ELISA at 0.5 ug/mL.
Quality Control Testing	SEC-HPLC and Tris-Bis PAGE SEC-HPLC The purity of Human Siglec-4a is greater than 95% as determined by SEC-HPLC. Tris-Bis PAGE Human Siglec-4a on Tris-Bis PAGE under reduced condition. The purity is greater than 95%.
Recommend Usage	Biological Activity ELISA SDS-PAGE The optimal working dilution should be determined by the end user.
Storage Buffer	Lyophilized from sterile distilled Water is > 100 ug/mL
Storage Instruction	Store at 2°C to 8°C for 1 week. For long term storage, aliquot and store at -20°C to -80°C. Aliquot to avoid repeated freezing and thawing.
Note	Result of bioactivity analysis

Applications

- Enzyme-linked Immunoabsorbent Assay

Immobilized Human Siglec-4a, His Tag at 0.5 ug/mL (100 uL/well) on the plate. Dose response curve for Anti-Siglec-4a Antibody, hFc Tag with the EC₅₀ of 3.7 ng/mL determined by ELISA.

- Functional Study

- SDS-PAGE

Gene Info — MAG

Entrez GeneID	4099
Protein Accession#	P20916
Gene Name	MAG
Gene Alias	GMA, S-MAG, SIGLEC-4A, SIGLEC4A
Gene Description	myelin associated glycoprotein
Omim ID	159460
Gene Ontology	Hyperlink
Gene Summary	<p>The protein encoded by this gene is a type I membrane protein and member of the immunoglobulin superfamily. It is thought to be involved in the process of myelination. It is a lectin that binds to sialylated glycoconjugates and mediates certain myelin-neuron cell-cell interactions. Two alternatively spliced transcripts encoding different isoforms have been described for this gene. [provided by RefSeq]</p>
Other Designations	myelin-associated glycoprotein sialic acid-binding immunoglobulin-like lectin 4A

Pathway

- [Cell adhesion molecules \(CAMs\)](#)

Disease

- [Genetic Predisposition to Disease](#)
- [Multiple Sclerosis](#)
- [Schizophrenia](#)