

Bioactive

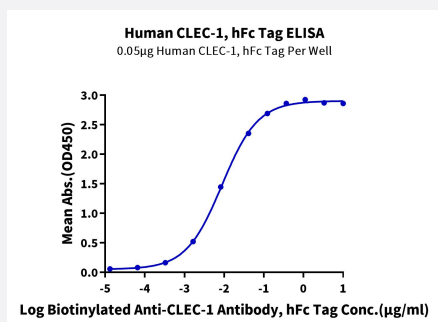
HuPro®

CLEC1A (Human) Recombinant Protein

Catalog # P9837

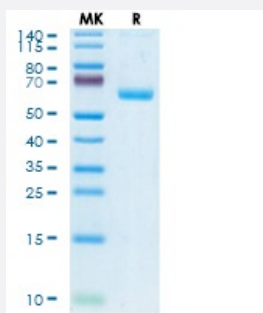
Size 100 ug

Applications



Enzyme-linked Immunoabsorbent Assay

Immobilized Human CLEC-1, hFc Tag at 0.5 ug/mL (100 uL/Well) on the plate. Dose response curve for Biotinylated Anti-CLEC-1 Antibody, hFc Tag with the EC50 8.8 ng/mL determined by ELISA.



Tris-Bis PAGE

Human CLEC-1 on Tris-Bis PAGE under reduced condition. The purity is greater than 95%.

Specification

Product Description	Human CLEC1A (Q8NC01, Gln74-Asp280) partial recombinant protein with hFc tag at N-Terminus expressed in HEK293 cells.
Sequence	Gln74-Asp280
Host	Human
Theoretical MW (kDa)	51.2
Form	Lyophilized
Preparation Method	Mammalian cell (HEK293) expression system

Purity	> 95% as determined by Tris-Bis PAGE
Endotoxin Level	< 1 EU per 1 ug of protein (determined by LAL method)
Activity	The EC ₅₀ was 8.8 ng/mL, measured by ELISA at 0.5 ug/mL.
Quality Control Testing	Tris-Bis PAGE Tris-Bis PAGE Human CLEC-1 on Tris-Bis PAGE under reduced condition. The purity is greater than 95%.
Recommend Usage	Biological Activity ELISA SDS-PAGE The optimal working dilution should be determined by the end user.
Storage Buffer	Lyophilized from sterile distilled Water is > 100 ug/mL
Storage Instruction	Store at 2°C to 8°C for 1 week. For long term storage, aliquot and store at -20°C to -80°C. Aliquot to avoid repeated freezing and thawing.
Note	Result of bioactivity analysis

Applications

- Enzyme-linked Immunoabsorbent Assay

Immobilized Human CLEC-1, hFc Tag at 0.5 ug/mL (100 uL/Well) on the plate. Dose response curve for Biotinylated Anti-CLEC-1 Antibody, hFc Tag with the EC₅₀ 8.8 ng/mL determined by ELISA.

- Functional Study

- SDS-PAGE

Gene Info — CLEC1A

Entrez GeneID	51267
Protein Accession#	Q8NC01
Gene Name	CLEC1A
Gene Alias	CLEC1, MGC34328
Gene Description	C-type lectin domain family 1, member A
Omim ID	606782

Gene Ontology[Hyperlink](#)**Gene Summary**

This gene encodes a member of the C-type lectin/C-type lectin-like domain (CTL/CTLD) superfamily. Members of this family share a common protein fold and have diverse functions, such as cell adhesion, cell-cell signalling, glycoprotein turnover, and roles in inflammation and immune response. The encoded protein may play a role in regulating dendritic cell function. Alternative splice variants have been described but their biological nature has not been determined. This gene is closely linked to other CTL/CTLD superfamily members on chromosome 12p13 in the natural killer gene complex region. [provided by RefSeq]

Other Designations

C-type lectin-like receptor-1