

Bioactive

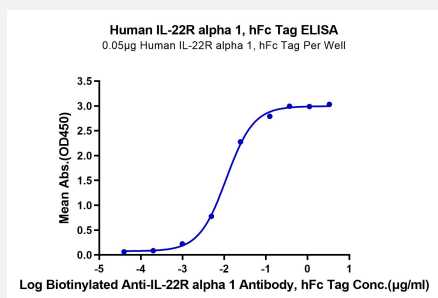
HuPro®

IL22RA1 (Human) Recombinant Protein

Catalog # P9832

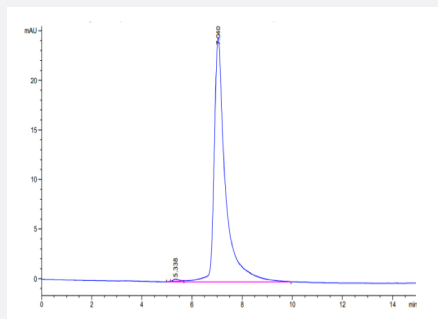
Size 100 ug

Applications



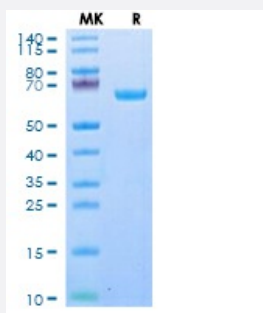
Enzyme-linked Immunoabsorbent Assay

Immobilized Human IL-22R alpha 1, hFc Tag at 0.5 ug/mL (100 uL/well) on the plate. Dose response curve for Biotinylated Anti-IL-22R alpha 1 Antibody, hFc Tag with the EC50 of 11.2 ng/mL determined by ELISA (QC Test).



SEC-HPLC

The purity of Human IL-22R alpha 1 is greater than 95% as determined by SEC-HPLC.



Tris-Bis PAGE

Human IL-22R alpha 1 on Tris-Bis PAGE under reduced condition. The purity is greater than 95%.

Specification

Product Description

Human IL22RA1 (Q8N6P7, His16-Thr228) partial recombinant protein with hFc tag at C-Terminus expressed in HEK293 cells.

Sequence	His16-Thr228
Host	Human
Theoretical MW (kDa)	51
Form	Lyophilized
Preparation Method	Mammalian cell (HEK293) expression system
Purity	> 95% as determined by Tris-Bis PAGE; > 95% as determined by HPLC
Endotoxin Level	< 1 EU per 1 ug of protein (determined by LAL method)
Activity	The EC ₅₀ was 11.2 ng/mL, measured by ELISA at 0.5 ug/mL.
Quality Control Testing	SEC-HPLC and Tris-Bis PAGE SEC-HPLC The purity of Human IL-22R alpha 1 is greater than 95% as determined by SEC-HPLC. Tris-Bis PAGE Human IL-22R alpha 1 on Tris-Bis PAGE under reduced condition. The purity is greater than 95%.
Recommend Usage	Biological Activity ELISA SDS-PAGE The optimal working dilution should be determined by the end user.
Storage Buffer	Lyophilized from sterile distilled Water is > 100 ug/mL
Storage Instruction	Store at 2°C to 8°C for 1 week. For long term storage, aliquot and store at -20°C to -80°C. Aliquot to avoid repeated freezing and thawing.
Note	Result of bioactivity analysis

Applications

- Enzyme-linked Immunoabsorbent Assay

Immobilized Human IL-22R alpha 1, hFc Tag at 0.5 ug/mL (100 uL/well) on the plate. Dose response curve for Biotinylated Anti-IL-22R alpha 1 Antibody, hFc Tag with the EC₅₀ of 11.2 ng/mL determined by ELISA (QC Test).

- Functional Study

- SDS-PAGE

Gene Info — IL22RA1

Entrez GeneID	58985
Protein Accession#	Q8N6P7
Gene Name	IL22RA1
Gene Alias	CRF2-9, IL22R, IL22R1
Gene Description	interleukin 22 receptor, alpha 1
Omim ID	605457
Gene Ontology	Hyperlink
Gene Summary	The protein encoded by this gene belongs to the class II cytokine receptor family, and has been shown to be a receptor for interleukin 22 (IL22). IL22 receptor is a protein complex that consists of this protein and interleukin 10 receptor, beta (IL10BR/CRFB4), a subunit also shared by the receptor complex for interleukin 10 (IL10). This gene and interleukin 28 receptor, alpha (IL28RA) form a cytokine receptor gene cluster in the chromosomal region 1p36. [provided by RefSeq]
Other Designations	OTTHUMP00000003073

Pathway

- [Cytokine-cytokine receptor interaction](#)
- [Jak-STAT signaling pathway](#)

Disease

- [Celiac Disease](#)
- [Chronic Disease](#)
- [Genetic Predisposition to Disease](#)
- [Rhinitis](#)
- [Sinusitis](#)