

Bioactive

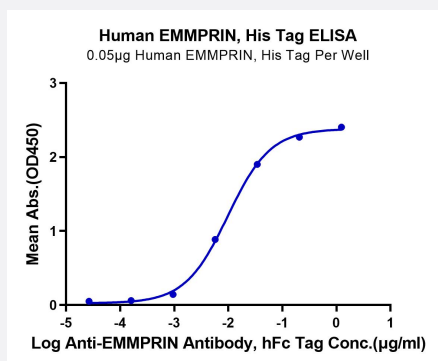
HuPro®

BSG (Human) Recombinant Protein

Catalog # P9819

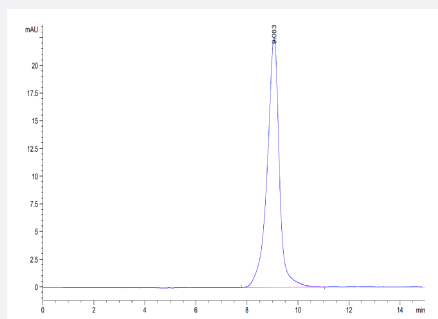
Size 100 ug

Applications



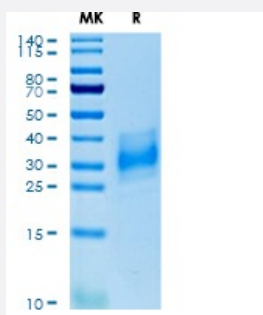
Enzyme-linked Immunoabsorbent Assay

Immobilized Human EMMPRIN, His Tag at 0.5 ug/mL (100 uL/well) on the plate. Dose response curve for Anti-EMMPRIN Antibody, hFc Tag with the EC50 of 9.8 ng/mL determined by ELISA.



SEC-HPLC

The purity of Human EMMPRIN is greater than 95% as determined by SEC-HPLC.



Tris-Bis PAGE

Human EMMPRIN on Tris-Bis PAGE under reduced condition. The purity is greater than 95%. You may also be interested in Canine EMMPRIN/CD147 Protein (EPN-DM147) From \$432.00 Human NKp46/NCR1/CD335 Protein (NKP-HM146) From \$394.00 Human ALCAM/CD166 Protein (ALC-HM101) From \$150.00 Human MUC18/CD146 Protein (MUC-HM118) From \$375.00 [View more associated products](#) [Recently Viewed Products](#)

Specification

Product Description	Human BSG (NP_940991.1, Ala22-His205) partial recombinant protein with His tag at C-Terminus expressed in HEK293 cells.
Sequence	Ala22-His205
Host	Human
Theoretical MW (kDa)	21.2
Form	Lyophilized
Preparation Method	Mammalian cell (HEK293) expression system
Purity	> 95% as determined by Tris-Bis PAGE; > 95% as determined by HPLC
Endotoxin Level	< 1 EU per 1 ug of protein (determined by LAL method)
Activity	The EC ₅₀ was 9.8 ng/mL, measured by ELISA at 0.5 ug/mL.
Quality Control Testing	SEC-HPLC and Tris-Bis PAGE SEC-HPLC The purity of Human EMMPRIN is greater than 95% as determined by SEC-HPLC. Tris-Bis PAGE Human EMMPRIN on Tris-Bis PAGE under reduced condition. The purity is greater than 95%. You may also be interested in Canine EMMPRIN/CD147 Protein (EPN-DM147) From \$432.00 Human NK p46/NCR1/CD335 Protein (NKP-HM146) From \$394.00 Human ALCAM/CD166 Protein (ALC-HM101) From \$150.00 Human MUC18/CD146 Protein (MUC-HM118) From \$375.00 View more associated products Recently Viewed Products
Recommend Usage	Biological Activity ELISA SDS-PAGE The optimal working dilution should be determined by the end user.
Storage Buffer	Lyophilized from sterile distilled Water is > 100 ug/mL
Storage Instruction	Store at 2°C to 8°C for 1 week. For long term storage, aliquot and store at -20°C to -80°C. Aliquot to avoid repeated freezing and thawing.
Note	Result of bioactivity analysis

Applications

- Enzyme-linked Immunoabsorbent Assay

Immobilized Human EMMPRIN, His Tag at 0.5 ug/mL (100 uL/well) on the plate. Dose response curve for Anti-EMMPRIN Antibody, hFc Tag with the EC₅₀ of 9.8 ng/mL determined by ELISA.

- Functional Study
- SDS-PAGE

Gene Info — BSG

Entrez GeneID [682](#)

Protein Accession# [NP_940991.1](#)

Gene Name BSG

Gene Alias 5F7, CD147, EMMPRIN, M6, OK, TCSF

Gene Description basigin (Ok blood group)

Omim ID [109480 111380](#)

Gene Ontology [Hyperlink](#)

Gene Summary The protein encoded by this gene is a plasma membrane protein that is important in spermatogenesis, embryo implantation, neural network formation, and tumor progression. The encoded protein is also a member of the immunoglobulin superfamily. Multiple transcript variants encoding different isoforms have been found for this gene. [provided by RefSeq]

Other Designations CD147 antigen|M6 leukocyte activation antigen|OK blood group antigen|basigin|collagenase stimulatory factor|extracellular matrix metalloproteinase inducer

Disease

- [Cardiovascular Diseases](#)
- [Diabetes Mellitus](#)
- [Edema](#)