

Bioactive

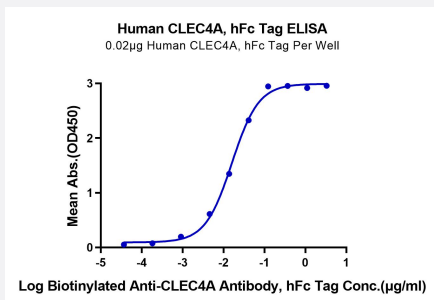
HuPro®

CLEC4A (Human) Recombinant Protein

Catalog # P9816

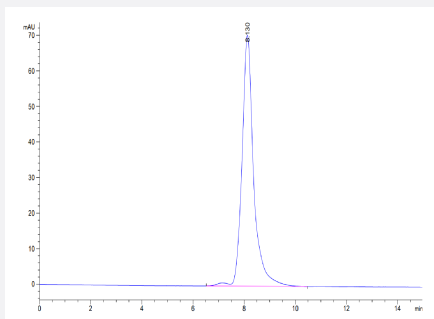
Size 100 ug

Applications



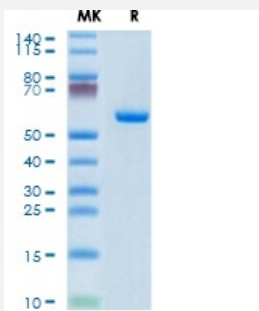
Enzyme-linked Immunoabsorbent Assay

Immobilized Human CLEC4A, hFc Tag at 0.2 ug/mL (100 uL/Well) on the plate. Dose response curve for Biotinylated Anti-CLEC4A Antibody, hFc Tag with the EC50 of 16.0 ng/mL determined by ELISA.



SEC-HPLC

The purity of Human CLEC4A is greater than 95% as determined by SEC-HPLC.



Tris-Bis PAGE

Human CLEC4A on Tris-Bis PAGE under reduced condition. The purity is greater than 95%.

Specification

Product Description

Human CLEC4A (Q9UMR7-1, Gln70-Leu237) partial recombinant protein with hFc tag at C-terminus expressed in HEK293 cells.

Sequence	Gln70-Leu237
Host	Human
Theoretical MW (kDa)	46.7
Form	Lyophilized
Preparation Method	Mammalian cell (HEK293) expression system
Purity	> 95% as determined by Tris-Bis PAGE; > 95% as determined by HPLC
Endotoxin Level	< 1 EU per 1 ug of protein (determined by LAL method)
Activity	The EC ₅₀ was 16.0 ng/mL, measured by ELISA at 0.2 ug/mL.
Quality Control Testing	SEC-HPLC and Tris-Bis PAGE SEC-HPLC The purity of Human CLEC4A is greater than 95% as determined by SEC-HPLC. Tris-Bis PAGE Human CLEC4A on Tris-Bis PAGE under reduced condition. The purity is greater than 95%.
Recommend Usage	Biological Activity ELISA SDS-PAGE The optimal working dilution should be determined by the end user.
Storage Buffer	Lyophilized from sterile distilled Water is > 100 ug/mL
Storage Instruction	Store at 2°C to 8°C for 1 week. For long term storage, aliquot and store at -20°C to -80°C. Aliquot to avoid repeated freezing and thawing.
Note	Result of bioactivity analysis

Applications

- Enzyme-linked Immunoabsorbent Assay

Immobilized Human CLEC4A, hFc Tag at 0.2 ug/mL (100 uL/Well) on the plate. Dose response curve for Biotinylated Anti-CLEC4A Antibody, hFc Tag with the EC₅₀ of 16.0 ng/mL determined by ELISA.

- Functional Study

- SDS-PAGE

Gene Info — CLEC4A

Entrez GeneID	50856
Protein Accession#	Q9UMR7-1
Gene Name	CLEC4A
Gene Alias	CLECSF6, DCIR, DDB27, HDCGC13P, LLIR
Gene Description	C-type lectin domain family 4, member A
Omim ID	605306
Gene Ontology	Hyperlink
Gene Summary	<p>This gene encodes a member of the C-type lectin/C-type lectin-like domain (CTL/CTLD) superfamily. Members of this family share a common protein fold and have diverse functions, such as cell adhesion, cell-cell signalling, glycoprotein turnover, and roles in inflammation and immune response. The encoded type 2 transmembrane protein may play a role in inflammatory and immune response. Multiple transcript variants encoding distinct isoforms have been identified for this gene. This gene is closely linked to other CTL/CTLD superfamily members on chromosome 12p13 in the natural killer gene complex region. [provided by RefSeq]</p>
Other Designations	C-type (calcium dependent, carbohydrate-recognition domain) lectin, superfamily member 6 dendritic cell immunoreceptor lectin-like immunoreceptor