

Bioactive

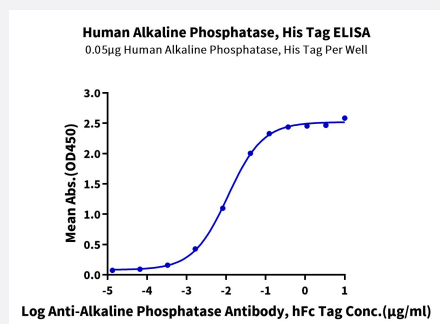
HuPro®

ALPP (Human) Recombinant Protein

Catalog # P9796

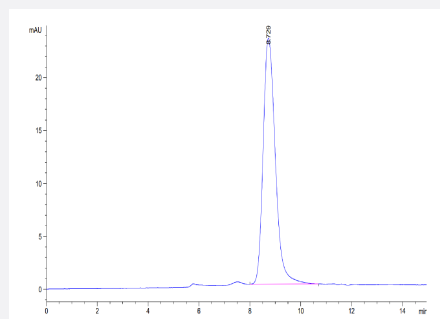
Size 100 ug

Applications



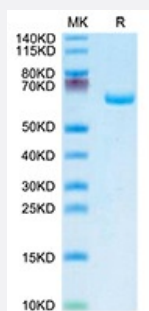
Enzyme-linked Immunoabsorbent Assay

Immobilized Human Alkaline Phosphatase (Placental type) , His Tag at 0.5 ug/mL (100 uL/Well) on the plate. Dose response curve for Anti-Alkaline Phosphatase Antibody, hFc Tag with the EC50 of 11.1 ng/mL determined by ELISA.



SEC-HPLC

The purity of Human Alkaline Phosphatase (Placental type) is greater than 95% as determined by SEC-HPLC.



Tris-Bis PAGE

Human Alkaline Phosphatase (Placental type) on Tris-Bis PAGE under reduced condition. The purity is greater than 95%.

Specification

Product Description

Human ALPP (P05187, Ile23-Asp506) partial recombinant protein with His tag at C-terminus expressed in HEK293 cells.

Sequence	Ile23-Asp506
Host	Human
Theoretical MW (kDa)	53.8
Form	Lyophilized
Preparation Method	Mammalian cell (HEK293) expression system
Purity	> 95% as determined by Tris-Bis PAGE; > 95% as determined by HPLC
Endotoxin Level	< 1 EU per 1 ug of protein (determined by LAL method)
Activity	The EC ₅₀ was 11.1 ng/mL, measured by ELISA at 0.5 ug/mL.
Quality Control Testing	SEC-HPLC and Tris-Bis PAGE SEC-HPLC The purity of Human Alkaline Phosphatase (Placental type) is greater than 95% as determined by SEC-HPLC. Tris-Bis PAGE Human Alkaline Phosphatase (Placental type) on Tris-Bis PAGE under reduced condition. The purity is greater than 95%.
Recommend Usage	Biological Activity ELISA SDS-PAGE The optimal working dilution should be determined by the end user.
Storage Buffer	Lyophilized from sterile distilled Water is > 100 ug/mL
Storage Instruction	Store at 2°C to 8°C for 1 week. For long term storage, aliquot and store at -20°C to -80°C. Aliquot to avoid repeated freezing and thawing.
Note	Result of bioactivity analysis

Applications

- Enzyme-linked Immunoabsorbent Assay

Immobilized Human Alkaline Phosphatase (Placental type) , His Tag at 0.5 ug/mL (100 uL/Well) on the plate. Dose response curve for Anti-Alkaline Phosphatase Antibody, hFc Tag with the EC₅₀ of 11.1 ng/mL determined by ELISA.

- Functional Study

- SDS-PAGE

Gene Info — ALPP

Entrez GeneID [250](#)

Protein Accession# [P05187](#)

Gene Name ALPP

Gene Alias ALP, FLJ61142, PALP, PLAP

Gene Description alkaline phosphatase, placental (Regan isozyme)

Omim ID [171800](#)

Gene Ontology [Hyperlink](#)

Gene Summary

There are at least four distinct but related alkaline phosphatases: intestinal, placental, placental-like, and liver/bone/kidney (tissue non-specific). The first three are located together on chromosome 2 while the tissue non-specific form is located on chromosome 1. The product of this gene is a membrane bound glycosylated enzyme, also referred to as the heat stable form, that is expressed primarily in the placenta although it is closely related to the intestinal form of the enzyme as well as to the placental-like form. The coding sequence for this form of alkaline phosphatase is unique in that the 3' untranslated region contains multiple copies of an Alu family repeat. In addition, this gene is polymorphic and three common alleles (type 1, type 2 and type 3) for this form of alkaline phosphatase have been well characterized. [provided by RefSeq]

Other Designations alkaline phosphomonoesterase|glycerophosphatase|placental alkaline phosphatase

Pathway

- [Folate biosynthesis](#)
- [gamma-Hexachlorocyclohexane degradation](#)
- [Metabolic pathways](#)

Disease

- [Birth Weight](#)
- [Fetal Death](#)