

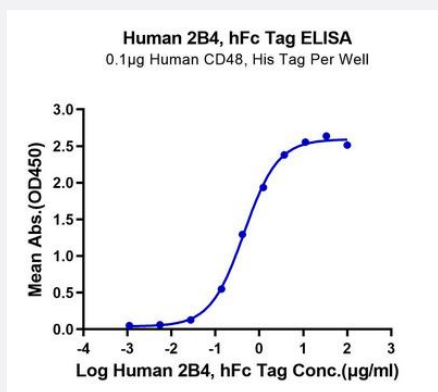
HuPro®

# CD244 (Human) Recombinant Protein

Catalog # P9793

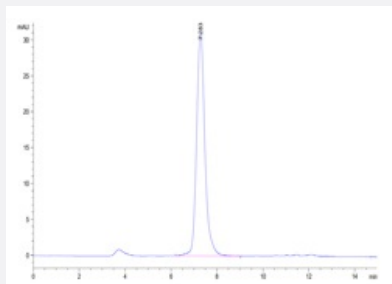
Size 100 ug

## Applications



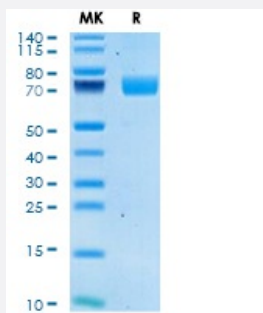
### Enzyme-linked Immunoabsorbent Assay

Immobilized Human CD48, His Tag at 1 ug/mL (100 uL/well) on the plate. Dose response curve for Human 2B4, hFc Tag with the EC50 of 0.45 ug/mL determined by ELISA.



### SEC-HPLC

The purity of Human 2B4/CD244/SLAMF4 is greater than 95% as determined by SEC-HPLC.



### Tris-Bis PAGE

Human 2B4/CD244/SLAMF4 on Tris-Bis PAGE under reduced condition. The purity is greater than 95%.

## Specification

Product Description	Human CD244 (Q9BZW8-2, Cys22-Arg221) partial recombinant protein with hFc tag at C-Terminus expressed in HEK293 cells.
Sequence	Cys22-Arg221
Host	Human
Theoretical MW (kDa)	49
Form	Lyophilized
Preparation Method	Mammalian cell (HEK293) expression system
Quality Control Testing	SEC-HPLC and Tris-Bis PAGE SEC-HPLC The purity of Human 2B4/CD244/SLAMF4 is greater than 95% as determined by SEC-HPLC. Tris-Bis PAGE Human 2B4/CD244/SLAMF4 on Tris-Bis PAGE under reduced condition. The purity is greater than 95%.
Recommend Usage	Biological Activity ELISA SDS-PAGE The optimal working dilution should be determined by the end user.
Storage Buffer	Lyophilized from sterile distilled Water is > 100 ug/mL
Storage Instruction	Store at 2°C to 8°C for 1 week. For long term storage, aliquot and store at -20°C to -80°C. Aliquot to avoid repeated freezing and thawing.
Note	Result of bioactivity analysis

## Applications

- Enzyme-linked Immunoabsorbent Assay

Immobilized Human CD48, His Tag at 1 ug/mL (100 uL/well) on the plate. Dose response curve for Human 2B4, hFc Tag with the EC50 of 0.45 ug/mL determined by ELISA.

- Functional Study

- SDS-PAGE

## Gene Info — CD244

Entrez GeneID

[51744](#)

Protein Accession#	<a href="#">Q9BZW8-2</a>
Gene Name	CD244
Gene Alias	2B4, NAIL, NKR2B4, Nmrk, SLAMF4
Gene Description	CD244 molecule, natural killer cell receptor 2B4
Omim ID	<a href="#">605554</a>
Gene Ontology	<a href="#">Hyperlink</a>
Gene Summary	<p>Natural killer (NK) cells express both activating and inhibitory cell surface receptors. Inhibitory signaling receptors all possess cytoplasmic immunoreceptor tyrosine-based inhibitory motifs, or ITIMs, whereas the activating receptors lack ITIMs and associate with DAP12 (TYROBP; MIM 604142), which contains an immunoreceptor tyrosine-based activation motif, or ITAM. Killer cell immunoglobulin (Ig)-like receptors, or KIRs (see KIR2DL1; MIM 604936), and other NK cell receptors interact with major histocompatibility complex (MHC) molecules (see MIM 142800). Members of the CD2 (MIM 186990) family adhere to each other instead. The cell surface glycoprotein 2B4 is related to CD2 and is implicated in the regulation of NK- and T-cell function (Boles et al., 1999 [PubMed 10 458320]).[supplied by OMIM</p>
Other Designations	CD244 natural killer cell receptor 2B4 NK cell activation inducing ligand NAIL OTTHUMP00000027884 natural killer cell receptor 2B4

## Pathway

- [Natural killer cell mediated cytotoxicity](#)

## Disease

- [Arthritis](#)
- [Cell Transformation](#)
- [Genetic Predisposition to Disease](#)
- [Lupus Erythematosus](#)
- [Tobacco Use Disorder](#)