

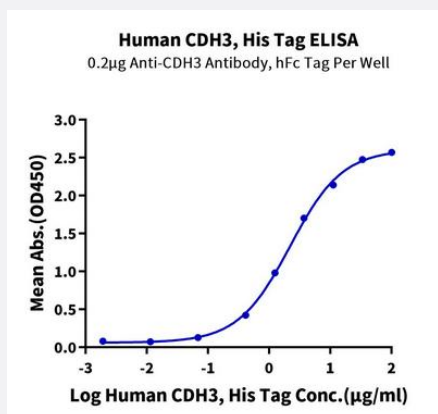
HuPro®

CDH3 (Human) Recombinant Protein

Catalog # P9762

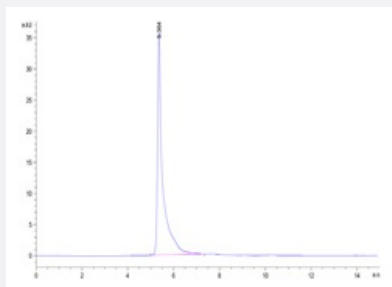
Size 100 ug

Applications



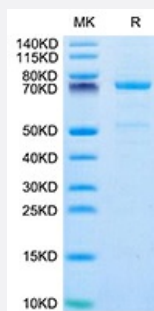
Enzyme-linked Immunoabsorbent Assay

Immobilized Anti-CDH3 Antibody, hFc Tag at 2 ug/mL (100 uL/Well) on the plate. Dose response curve for Human CDH3, His Tag with the EC50 of 2.1 ug/mL determined by ELISA.



SEC-HPLC

The purity of Human CDH3 is greater than 95% as determined by SEC-HPLC.



Tris-Bis PAGE

Human CDH3 on Tris-Bis PAGE under reduced condition. The purity is greater than 95%.

Specification

Product Description	Human CDH3 (P22223-1, Asp108-Gly654) partial recombinant protein with His tag at C-Terminus expressed in HEK293 cells.
Sequence	Asp108-Gly654
Host	Human
Theoretical MW (kDa)	64.31999999999999
Form	Liquid
Preparation Method	Mammalian cell (HEK293) expression system
Quality Control Testing	SEC-HPLC and Tris-Bis PAGE SEC-HPLC The purity of Human CDH3 is greater than 95% as determined by SEC-HPLC. Tris-Bis PAGE Human CDH3 on Tris-Bis PAGE under reduced condition. The purity is greater than 95%.
Recommend Usage	Biological Activity ELISA SDS-PAGE The optimal working dilution should be determined by the end user.
Storage Buffer	Lyophilized from sterile distilled Water is > 100 ug/mL
Storage Instruction	Store at -80°C for 12 Month. Aliquot to avoid repeated freezing and thawing.
Note	Result of bioactivity analysis

Applications

- Enzyme-linked Immunoabsorbent Assay

Immobilized Anti-CDH3 Antibody, hFc Tag at 2 ug/mL (100 uL/Well) on the plate. Dose response curve for Human CDH3, His Tag with the EC50 of 2.1 ug/mL determined by ELISA.

- Functional Study

- SDS-PAGE

Gene Info — CDH3

Entrez GeneID	1001
Protein Accession#	P22223-1
Gene Name	CDH3
Gene Alias	CDHP, HJMD, PCAD
Gene Description	cadherin 3, type 1, P-cadherin (placental)
Omim ID	114021 601553
Gene Ontology	Hyperlink
Gene Summary	<p>This gene is a classical cadherin from the cadherin superfamily. The encoded protein is a calcium-dependent cell-cell adhesion glycoprotein comprised of five extracellular cadherin repeats, a transmembrane region and a highly conserved cytoplasmic tail. This gene is located in a six-cadherin cluster in a region on the long arm of chromosome 16 that is involved in loss of heterozygosity events in breast and prostate cancer. In addition, aberrant expression of this protein is observed in cervical adenocarcinomas. Mutations in this gene have been associated with congenital hypotrichosis with juvenile macular dystrophy. [provided by RefSeq]</p>
Other Designations	cadherin 3, type 1 calcium-dependent adhesion protein, placental

Pathway

- [Cell adhesion molecules \(CAMs\)](#)

Disease

- [Colitis](#)
- [Genetic Predisposition to Disease](#)