

Bioactive

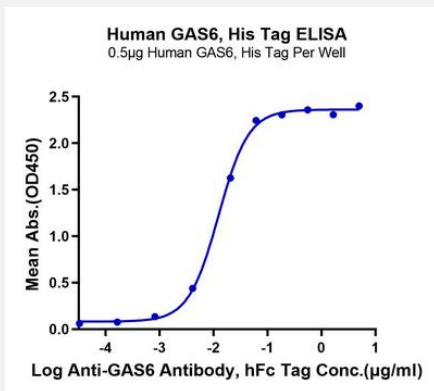
HuPro®

GAS6 (Human) Recombinant Protein

Catalog # P9752

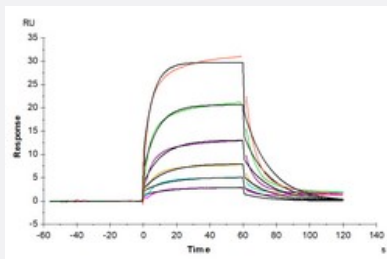
Size 100 ug

Applications



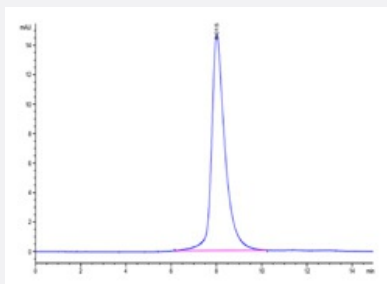
Enzyme-linked Immunoabsorbent Assay

Immobilized Human GAS6, His Tag at 5 ug/mL (100 uL/mL/well) on the plate. Dose response curve for Anti-GAS6 Antibody, hFc Tag with the EC₅₀ of 12.3 ng/mL determined by ELISA (QC Test).



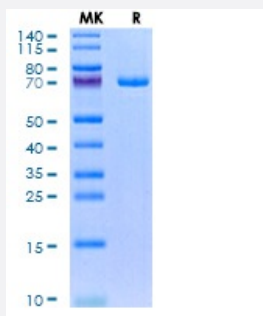
Surface Plasmon Resonance

Human GAS6, His Tag immobilized on CM5 Chip can bind Human TYRO3, His Tag with an affinity constant of 2.36 uM as determined in SPR assay (Biacore T200).



SEC-HPLC

The purity of Human GAS6 is greater than 95% as determined by SEC-HPLC.



Tris-Bis PAGE

Human GAS6 on Tris-Bis PAGE under reduced condition. The purity is greater than 95%.

Specification

Product Description	Human GAS6 (Q14393-2, Ala49-Ala678) partial recombinant protein with His tag at C-terminus expressed in HEK293 cells.
Sequence	Ala49-Ala678
Host	Human
Theoretical MW (kDa)	70.59999999999989
Form	Lyophilized
Preparation Method	Mammalian cell (HEK293) expression system
Purity	> 95% as determined by Tris-Bis PAGE; > 95% as determined by HPLC
Endotoxin Level	< 1 EU per 1 ug of protein (determined by LAL method)
Activity	The EC ₅₀ was 12.3 ng/mL, measured by ELISA at 5 ug/mL. The affinity constant of 2.36 uM as determined in SPR assay (Biacore T200).
Quality Control Testing	SEC-HPLC and Tris-Bis PAGE SEC-HPLC The purity of Human GAS6 is greater than 95% as determined by SEC-HPLC. Tris-Bis PAGE Human GAS6 on Tris-Bis PAGE under reduced condition. The purity is greater than 95%.
Recommend Usage	Biological Activity ELISA SPR SDS-PAGE The optimal working dilution should be determined by the end user.
Storage Buffer	Lyophilized from 0.22 um filtered solution of PBS, pH 7.4 (8% trehalose). Trehalose is added as protectant before lyophilization.
Storage Instruction	Store at 2°C to 8°C for 1 week. For long term storage, aliquot and store at -20°C to -80°C. Aliquot to avoid repeated freezing and thawing.

Note

Result of bioactivity analysis

Applications

- Enzyme-linked Immunoabsorbent Assay

Immobilized Human GAS6, His Tag at 5 ug/mL (100 uL/mL/well) on the plate. Dose response curve for Anti-GAS6 Antibody, hFc Tag with the EC50 of 12.3 ng/mL determined by ELISA (QC Test).

- Functional Study

- SDS-PAGE

- Surface Plasmon Resonance

Human GAS6, His Tag immobilized on CM5 Chip can bind Human TYRO3, His Tag with an affinity constant of 2.36 uM as determined in SPR assay (Biacore T200).

Gene Info — GAS6

Entrez GeneID [2621](#)

Protein Accession# [Q14393-2](#)

Gene Name GAS6

Gene Alias AXLLG, AXSF, DKFZp666G247, FLJ34709

Gene Description growth arrest-specific 6

Omim ID [600441](#)

Gene Ontology [Hyperlink](#)

Gene Summary This gene product is a gamma-carboxyglutamic acid (Gla)-containing protein thought to be involved in the stimulation of cell proliferation, and may play a role in thrombosis. Alternatively spliced transcript variants encoding different isoforms have been found for this gene. [provided by RefSeq]

Other Designations AXL receptor tyrosine kinase ligand|AXL stimulatory factor|OTTHUMP00000018777

Disease

- [Angina Pectoris](#)

- [Brain Ischemia](#)
- [Carotid Artery Diseases](#)
- [Cerebral Hemorrhage](#)
- [Cerebrovascular Accident](#)
- [Genetic Predisposition to Disease](#)
- [Myocardial Infarction](#)
- [Stroke](#)