

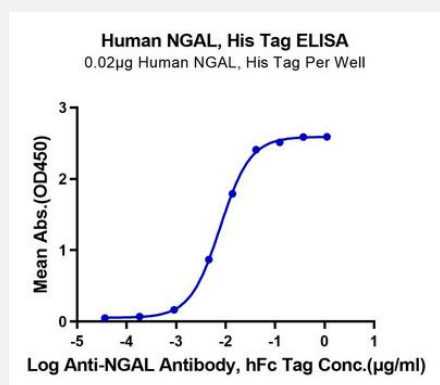
HuPro®

LCN2 (Human) Recombinant Protein

Catalog # P9748

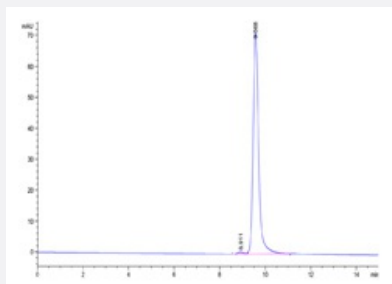
Size 100 ug

Applications



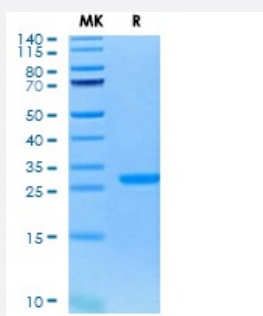
Enzyme-linked Immunoabsorbent Assay

Immobilized Human NGAL, His Tag at 0.2 ug/mL (100 uL/mL/Well) on the plate. Dose response curve for Anti-NGAL Antibody, hFc Tag with the EC50 of 7.8 ng/mL determined by ELISA.



SEC-HPLC

The purity of Human NGAL is greater than 95% as determined by SEC-HPLC.



Tris-Bis PAGE

Human NGAL on Tris-Bis PAGE under reduced condition. The purity is greater than 95%.

Specification

Product Description	Human LCN2 (P80188-1, Gln21-Gly198) partial recombinant protein with His tag at C-terminus expressed in HEK293 cells.
Sequence	Gln21-Gly198
Host	Human
Theoretical MW (kDa)	21.64
Form	Lyophilized
Preparation Method	Mammalian cell (HEK293) expression system
Quality Control Testing	SEC-HPLC and Tris-Bis PAGE SEC-HPLC The purity of Human NGAL is greater than 95% as determined by SEC-HPLC. Tris-Bis PAGE Human NGAL on Tris-Bis PAGE under reduced condition. The purity is greater than 95%.
Recommend Usage	Biological Activity ELISA SDS-PAGE The optimal working dilution should be determined by the end user.
Storage Buffer	Lyophilized from sterile distilled Water is > 100 ug/mL
Storage Instruction	Store at 2°C to 8°C for 1 week. For long term storage, aliquot and store at -20°C to -80°C. Aliquot to avoid repeated freezing and thawing.
Note	Result of bioactivity analysis

Applications

- Enzyme-linked Immunoabsorbent Assay

Immobilized Human NGAL, His Tag at 0.2 ug/mL (100 uL/mL/Well) on the plate. Dose response curve for Anti-NGAL Antibody, hFc Tag with the EC50 of 7.8 ng/mL determined by ELISA.

- Functional Study

- SDS-PAGE

Gene Info — LCN2

Entrez GeneID [3934](#)

Protein Accession#	P80188-1
Gene Name	LCN2
Gene Alias	NGAL
Gene Description	lipocalin 2
Omim ID	600181
Gene Ontology	Hyperlink
Other Designations	OTTHUMP00000022238 OTTHUMP00000022240 neutrophil gelatinase-associated lipocalin oncogene 24p3 siderocalin

Disease

- [Abortion](#)
- [Genetic Predisposition to Disease](#)
- [Ovarian Neoplasms](#)