

Bioactive

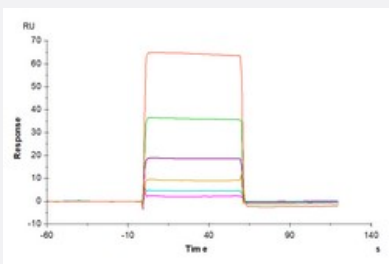
HuPro®

# IGSF11 (Human) Recombinant Protein

Catalog # P9740

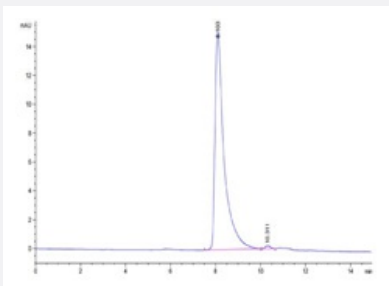
Size 100 ug

## Applications



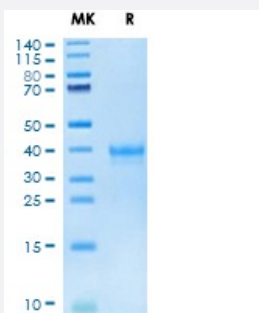
### Surface Plasmon Resonance

Human B7-H5, hFc Tag captured on CM5 Chip via Protein A can bind Human IGSF11, His Tag with an affinity constant of 14.44  $\mu$ M as determined in SPR assay (Biacore T200).



### SEC-HPLC

The purity of Human IGSF11 is greater than 95% as determined by SEC-HPLC.



### Tris-Bis PAGE

Human IGSF11 on Tris-Bis PAGE under reduced condition. The purity is greater than 95%.

## Specification

### Product Description

Human IGSF11 (Q5DX21-1, 23 a.a. - 241 a.a.) partial recombinant protein with His tag at C-terminus expressed in HEK293 cells.

<b>Sequence</b>	LEVSESPGSIQVARGQPAVLPCFTTSAALINLVNWMVTPLSNANQPEQVILYQGGQMFDGAPRF HGRVGFTGTMPATNVSIFINNTQLSDTGTYQCLVNNLPDIGGRNIGVTGLTVLVPPSAPHCQIQGSQ DIGSDVILLCSSEEGIPRPTYLWEKLDNTLKLPTATQDQVQGTVTIRNISALSSGLYQCVASNAIGT STCLLDLQVISPQPRNIG
<b>Host</b>	Human
<b>Theoretical MW (kDa)</b>	24.31
<b>Form</b>	Lyophilized
<b>Preparation Method</b>	Mammalian cell (Expi293, high-yield transient HEK293) expression system
<b>Purity</b>	> 95% as determined by Tris-Bis PAGE; > 95% as determined by HPLC
<b>Endotoxin Level</b>	< 1 EU per 1 ug of protein (determined by LAL method)
<b>Activity</b>	The affinity constant of 14.44 uM as determined in SPR assay (Biacore T200).
<b>Quality Control Testing</b>	SEC-HPLC and Tris-Bis PAGE SEC-HPLC The purity of Human IGSF11 is greater than 95% as determined by SEC-HPLC. Tris-Bis PAGE Human IGSF11 on Tris-Bis PAGE under reduced condition. The purity is greater than 95%.
<b>Recommend Usage</b>	Biological Activity SDS-PAGE The optimal working dilution should be determined by the end user.
<b>Storage Buffer</b>	Lyophilized from sterile distilled Water is > 100 ug/mL
<b>Storage Instruction</b>	Store at 2°C to 8°C for 1 week. For long term storage, aliquot and store at -20°C to -80°C. Aliquot to avoid repeated freezing and thawing.
<b>Note</b>	Result of bioactivity analysis

## Applications

- Functional Study
- SDS-PAGE
- Surface Plasmon Resonance

Human B7-H5, hFc Tag captured on CM5 Chip via Protein A can bind Human IGSF11, His Tag with an affinity constant of 14.44 uM as determined in SPR assay (Biacore T200).

## Gene Info — IGSF11

Entrez GeneID	<a href="#">152404</a>
Protein Accession#	<a href="#">Q5DX21-1</a>
Gene Name	IGSF11
Gene Alias	BT-IgSF, CXADRL1, Igsf13, MGC35227, VSIG3
Gene Description	immunoglobulin superfamily, member 11
Omim ID	<a href="#">608351</a>
Gene Ontology	<a href="#">Hyperlink</a>
Gene Summary	IGSF11 is an immunoglobulin (Ig) superfamily member that is preferentially expressed in brain and testis. It shares significant homology with coxsackievirus and adenovirus receptor (CXADR; MIM 602621) and endothelial cell-selective adhesion molecule (ESAM).[supplied by OMIM]
Other Designations	CXADR like 1 V-set and immunoglobulin domain containing 3 brain and testis-specific immunoglobulin superfamily protein