

Bioactive

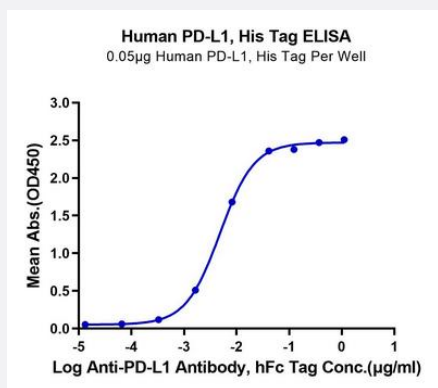
HuPro®

CD274 (Human) Recombinant Protein

Catalog # P9715

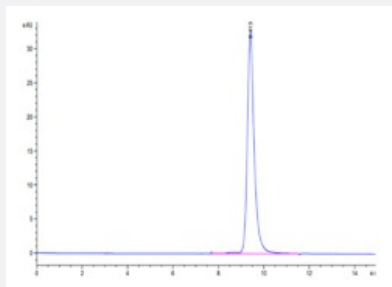
Size 100 ug

Applications



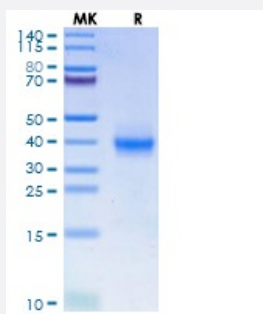
Enzyme-linked Immunoabsorbent Assay

Immobilized Human PD-L1, His Tag at 0.5 ug/mL (100 uL/well) on the plate. Dose response curve for Anti-PD-L1 Antibody, hFc Tag with the EC50 of 4.8 ng/mL determined by ELISA.



SEC-HPLC

The purity of Human PD-L1 is greater than 95% as determined by SEC-HPLC.



Tris-Bis PAGE

Human PD-L1 on Tris-Bis PAGE under reduced condition. The purity is greater than 95%.

Specification

Product Description	Human CD274 (Q9NZQ7-1, 19 a.a. - 226 a.a.) partial recombinant protein with His tag at C-terminus expressed in HEK293 cells.
Sequence	FTVTVPKDLVVEYGSNMTIECKFPVEKQLDLAALVYWEMEDKNIIQFVHGEECLKVQHSSYRQR ARLLKQQLSLGNAALQITDVKLQDAGVYRCMISYGGADYKRITVKVNAPYNKINQRILVVDPVTSEH ELTCQAEGYPKAEVWTTSSDHQVLSGKTTTTNSKREEKLFNVTSTLRINTTTNEIFYCTFRRLDPEE NHTAELVI
Host	Human
Theoretical MW (kDa)	24.93
Form	Liquid
Preparation Method	Mammalian cell (Expi293, high-yield transient HEK293) expression system
Purity	> 95% as determined by Tris-Bis PAGE; > 95% as determined by HPLC
Endotoxin Level	< 1 EU per 1 ug of protein (determined by LAL method)
Activity	The EC ₅₀ was 4.8 ng/mL, measured by ELISA at 0.5 ug/mL.
Quality Control Testing	SEC-HPLC and Tris-Bis PAGE SEC-HPLC The purity of Human PD-L1 is greater than 95% as determined by SEC-HPLC. Tris-Bis PAGE Human PD-L1 on Tris-Bis PAGE under reduced condition. The purity is greater than 95%.
Recommend Usage	Biological Activity ELISA SDS-PAGE The optimal working dilution should be determined by the end user.
Storage Buffer	In PBS pH 7.4
Storage Instruction	Store at -80°C for 12 Month. Aliquot to avoid repeated freezing and thawing.
Note	Result of bioactivity analysis

Applications

- Enzyme-linked Immunoabsorbent Assay

Immobilized Human PD-L1, His Tag at 0.5 ug/mL (100 uL/well) on the plate. Dose response curve for Anti-PD-L1 Antibody, hFc Tag with the EC₅₀ of 4.8 ng/mL determined by ELISA.

- Functional Study

- [SDS-PAGE](#)

Gene Info — CD274

Entrez GeneID	29126
Protein Accession#	Q9NZQ7-1
Gene Name	CD274
Gene Alias	B7-H, B7H1, MGC142294, MGC142296, PD-L1, PDCD1L1, PDCD1LG1, PDL1
Gene Description	CD274 molecule
Omim ID	605402
Gene Ontology	Hyperlink
Other Designations	CD274 antigen OTTHUMP00000021029 programmed cell death 1 ligand 1

Pathway

- [Cell adhesion molecules \(CAMs\)](#)

Disease

- [Addison Disease](#)
- [Arthritis](#)
- [Autoimmune Diseases](#)
- [Diabetes Mellitus](#)
- [Genetic Predisposition to Disease](#)
- [Graves Disease](#)
- [Lupus Erythematosus](#)
- [Multiple Sclerosis](#)
- [Narcolepsy](#)

- [Rheumatoid Nodule](#)