

Bioactive

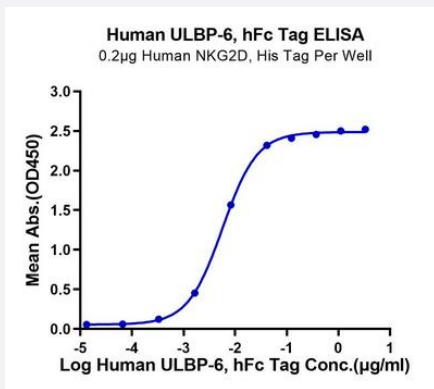
HuPro®

# RAET1L (Human) Recombinant Protein

Catalog # P9710

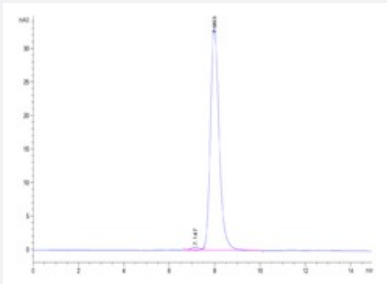
Size 100 ug

## Applications



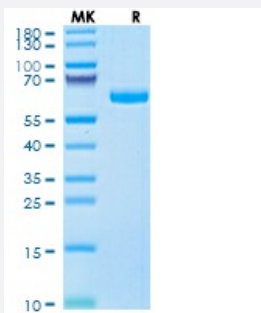
### Enzyme-linked Immunoabsorbent Assay

Immobilized Human NKG2D, His Tag at 2 ug/mL (100 uL/well) on the plate. Dose response curve for Human ULBP-6, hFc Tag with the EC50 of 5.7 ng/mL determined by ELISA.



### SEC-HPLC

The purity of Human ULBP-6 is greater than 95% as determined by SEC-HPLC.



### Tris-Bis PAGE

Human ULBP-6 on Tris-Bis PAGE under reduced condition. The purity is greater than 95%.

## Specification

Product Description	Human RAET1L (Q5VY80, 26 a.a. - 218 a.a.) partial recombinant protein with hFc tag at C-terminus expressed in HEK293 cells.
Sequence	RRDDPHSLCYDITVIPKFRPGPRWCAVQGQVDEKTFLLHYDCGNKTVTPVSPLGKKLNVMTMAWKA QNPVLRREVVDILTEQLLDIQLENYTPKEPLTLQARMSCEQKAEGHSSGSWQFSIDGQTFLFLDSEK RMWTTVHPGARKMKEKWENDKDVAMSFHYISMGDCIGWLEDFLMGMDSTLEPSAGAPLAMSS G
Host	Human
Theoretical MW (kDa)	48.61
Form	Liquid
Preparation Method	Mammalian cell (Expi293, high-yield transient HEK293) expression system
Purity	> 95% as determined by Tris-Bis PAGE; > 95% as determined by HPLC
Endotoxin Level	< 1 EU per 1 ug of protein (determined by LAL method)
Activity	The EC <sub>50</sub> was 5.7 ng/mL, measured by ELISA at 2 ug/mL.
Quality Control Testing	SEC-HPLC and Tris-Bis PAGE SEC-HPLC The purity of Human ULBP-6 is greater than 95% as determined by SEC-HPLC. Tris-Bis PAGE Human ULBP-6 on Tris-Bis PAGE under reduced condition. The purity is greater than 95%.
Recommend Usage	Biological Activity ELISA SDS-PAGE The optimal working dilution should be determined by the end user.
Storage Buffer	In PBS pH 7.4
Storage Instruction	Store at -80°C for 12 Month. Aliquot to avoid repeated freezing and thawing.
Note	Result of bioactivity analysis

## Applications

- Enzyme-linked Immunoabsorbent Assay

Immobilized Human NKG2D, His Tag at 2 ug/mL (100 uL/well) on the plate. Dose response curve for Human ULBP-6, hFc Tag with the EC<sub>50</sub> of 5.7 ng/mL determined by ELISA.

- Functional Study

- SDS-PAGE

## Gene Info — RAET1L

Entrez GeneID	<a href="#">154064</a>
Protein Accession#	<a href="#">Q5VY80</a>
Gene Name	RAET1L
Gene Alias	-
Gene Description	retinoic acid early transcript 1L
Omim ID	<a href="#">611047</a>
Gene Ontology	<a href="#">Hyperlink</a>
Gene Summary	RAET1L belongs to the RAET1 family of major histocompatibility complex (MHC) class I-related genes, which are located within a 180-kb cluster on chromosome 6q24.2-q25.3. The REAT1 gene s encode glycoproteins that contain extracellular alpha-1 and alpha-2 domains, but they lack the membrane proximal Ig-like alpha-3 domain. Most RAET1 glycoproteins are anchored to the membrane via glycosylphosphatidylinositol (GPI) linkage (Radosavljevic et al., 2002 [PubMed 11827464]).[supplied by OMIM]
Other Designations	OTTHUMP00000017409

## Pathway

- [Natural killer cell mediated cytotoxicity](#)

## Disease

- [Genetic Predisposition to Disease](#)