

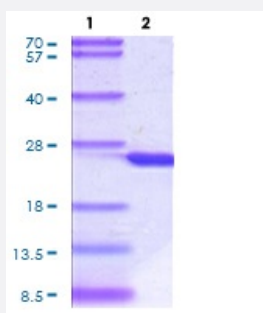
Bioactive

CSH1 (Human) Recombinant Protein

Catalog # P8076

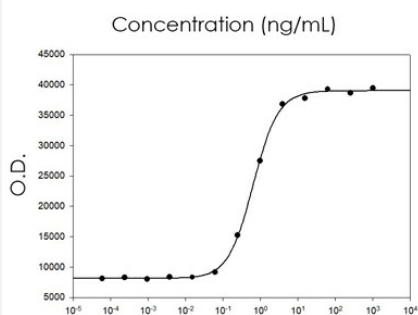
Size 100 ug

Applications



Result of bioactivity analysis

Result of bioactivity analysis



Specification

Product Description

Human CSH1 (P0DML2, 27 a.a. - 217 a.a.) partial length recombinant protein His tag expressed in Baculovirus expression system.

Sequence

VQTVPLSRLFDHAMLQAHRHQLAIDTYQEFEEITYPKDQKYSFLHDSQTSFCFSDSIPTPSNMEE
TQQKSNLELLRISLLIESWLEPVRFRLSMFANNLVYDTSDDYHLLKDLEEGIQTLMGRLDGS
RRTGQILKQTYSKFDTNSHNHDALLKNYGLLYCFRKMDMKVETFLRMVQCRSVEGSCG

Host

Viruses

Theoretical MW (kDa)

23.1

Form	Liquid
Preparation Method	Baculovirus expression system
Purity	> 90% by SDS-PAGE
Endotoxin Level	< 1 EU per 1 ug of protein (determined by LAL method)
Activity	ED ₅₀ is < 0.8 ng/mL, measured in a cell proliferation assay using Nb2-11 Rat lymphoma cells.
Quality Control Testing	3 ug by SDS-PAGE under reducing condition and visualized by Coomassie blue stain.
Storage Buffer	In Phosphate-Buffer Saline pH 7.4 (30% glycerol)
Storage Instruction	Store at 2°C to 8°C for 1 week. For long term storage, aliquot and store at -20°C to -80°C. Aliquot to avoid repeated freezing and thawing.
Note	Result of bioactivity analysis Result of bioactivity analysis

Applications

- Functional Study
- SDS-PAGE

Gene Info — CSH1

Entrez GeneID	1442
Protein Accession#	P0DML2
Gene Name	CSH1
Gene Alias	CSA, CSMT, FLJ75407, PL
Gene Description	chorionic somatomammotropin hormone 1 (placental lactogen)
Omim ID	150200
Gene Ontology	Hyperlink

Gene Summary

The protein encoded by this gene is a member of the somatotropin/prolactin family of hormones and plays an important role in growth control. The gene is located at the growth hormone locus on chromosome 17 along with four other related genes in the same transcriptional orientation; an arrangement which is thought to have evolved by a series of gene duplications. Although the five genes share a remarkably high degree of sequence identity, they are expressed selectively in different tissues. Alternative splicing generates additional isoforms of each of the five growth hormones, leading to further diversity and potential for specialization. This particular family member is expressed mainly in the placenta and utilizes multiple transcription initiation sites. Expression of the identical mature proteins for chorionic somatomammotropin hormones 1 and 2 is upregulated during development, although the ratio of 1 to 2 increases by term. Mutations in this gene result in placental lactogen deficiency and Silver-Russell syndrome. [provided by RefSeq]

Other Designations

CS-1|choriomammotropin|chorionic somatomammotropin A|chorionic somatomammotropin hormone 1|hCS-A|placental lactogen

Pathway

- [Cytokine-cytokine receptor interaction](#)
- [Jak-STAT signaling pathway](#)
- [Neuroactive ligand-receptor interaction](#)

Disease

- [Birth Weight](#)
- [Body Weight](#)
- [Breast cancer](#)
- [Breast Neoplasms](#)
- [Genetic Predisposition to Disease](#)
- [Metabolic Syndrome X](#)