

Bioactive

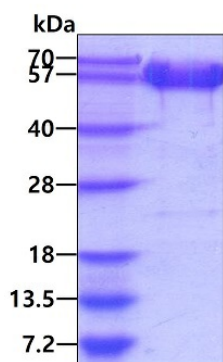
HuPro®

Spp1 (Mouse) Recombinant Protein

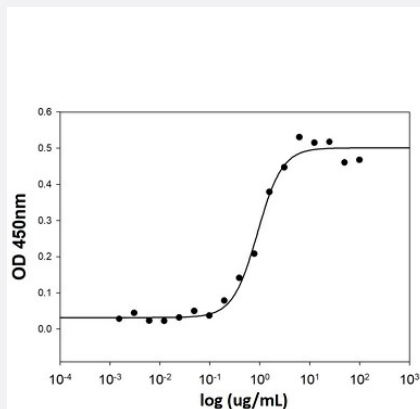
Catalog # P7882

Size 500 ug

Applications



SDS-PAGE analysis of Spp1 (Mouse) Recombinant Protein.



Result of activity analysis

Result of activity analysis

Specification

Product Description

Mouse Spp1 (P10923, 17 a.a. - 294 a.a.) partial recombinant protein with His tag expressed in HEK 293 cells.

Sequence

LPVKVTDSGSSEEKLYSLHPDPIATWLVPDPSQKQNLAPQNAVSSEEKDDFKQETLPSNSNES
HDHMDDDDDDDDDGDHAESEDSVDSDESDESHHSEDETVTASTQADTFPIVPTVDVPN
GRGDSLAYGLRSKRSFQVSDEQYPDATDEDLTSHMKSGESKESLDVIPVAQLLSMPDQDNN
GKGSHESQLDEPSLETHRLEHSKESQESADQSDVIDSQASSKASLEHQSHKFHSHKDKLVLD
PKSKEDDRYLKFRISHELESSSSEVN

Host	Human
Theoretical MW (kDa)	31.8
Form	Liquid
Preparation Method	Mammalian cell (HEK 293) expression system
Purity	> 90% as analyzed by SDS-PAGE.
Endotoxin Level	< 1 EU/ug of protein by the LAL method.
Activity	ED ₅₀ < 1.5 ug/mL, measured by the ability of the immobilized protein to support the adhesion of HEK 293 human embryonic kidney cells. When cells are added to mouse SPP1 coated plates.
Quality Control Testing	SDS-PAGE Stained with Coomassie Blue. SDS-PAGE analysis of Spp1 (Mouse) Recombinant Protein.
Recommend Usage	Biological Activity SDS-PAGE The optimal working dilution should be determined by the end user.
Storage Buffer	In PBS, pH 7.4 (10% glycerol)
Storage Instruction	Store at 4°C for 1 week. For long term storage store at -20°C to -80°C. Aliquot to avoid repeated freezing and thawing.
Note	Result of activity analysis Result of activity analysis

Applications

- Functional Study
- SDS-PAGE

Gene Info — Spp1

Entrez GeneID	20750
Protein Accession#	P10923
Gene Name	Spp1
Gene Alias	AA960535, A1790405, Apl-1, BNSP, BSPI, Bsp, ETA-1, Eta, OP, Opn, Opnl, Ric, Spp-1, minopontin

Gene Description	secreted phosphoprotein 1
Gene Ontology	Hyperlink
Other Designations	44 kDa bone phosphoprotein 44kDa bone phosphoprotein OTTMUSP00000029095 OTTMUSP0000029097 OTTMUSP00000029098 bone sialoprotein 1 osteopontin osteopontin-like protein