

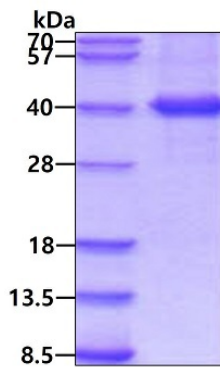
Full-Length

## MAP2K6 (Human) Recombinant Protein

Catalog # P7871

Size 500 ug

### Applications



SDS-PAGE analysis of MAP2K6 (Human) Recombinant Protein.

### Specification

<b>Product Description</b>	Human MAP2K6 (P52564, 1 a.a. - 334 a.a.) full-length recombinant protein with His tag expressed in Baculovirus.
<b>Sequence</b>	MSQSKGKKRNPGLKIPKEAFEQPQTSSSTPPRDLSKACISIGNQNFEVKADDLEPIMELGRGAYG VVEKMRHVPSGQIMAVKRIRATVNSQEQKRLLMDLDISMRTVDCPFTVTFYGALFREGDVVICME LMDTSLDKFYKQVIDKGQTIPEDILGKIAVSIVKALEHLHSKLSVIHRDVKPSNVLINALGQVKMCD GISGYLVDSVAKTIDAGCKPYMAPERINPELNQKGYSVKSDWSLGITMIELAILRFPYDSWGTPPFQ LKQVVEEPSPQLPADKFSAEFVDFTSQCLKKNSKERPTYPELMQHPFFTLHESKGTDVASFVKLI LGD
<b>Host</b>	Viruses
<b>Theoretical MW (kDa)</b>	38.3
<b>Form</b>	Liquid
<b>Preparation Method</b>	Baculovirus expression system
<b>Purity</b>	> 90% as analyzed by SDS-PAGE.
<b>Endotoxin Level</b>	< 1 EU/ug of protein by the LAL method.

**Quality Control Testing**

SDS-PAGE Stained with Coomassie Blue.  
SDS-PAGE analysis of MAP2K6 (Human) Recombinant Protein.

**Recommend Usage**

SDS-PAGE  
The optimal working dilution should be determined by the end user.

**Storage Buffer**

In PBS, pH 7.4 ( 20% glycerol)

**Storage Instruction**

Store at 4°C for 1 week. For long term storage store at -20°C to -80°C.  
Aliquot to avoid repeated freezing and thawing.

## Applications

- SDS-PAGE

## Gene Info — MAP2K6

**Entrez GeneID**

[5608](#)

**Protein Accession#**

[P52564](#)

**Gene Name**

MAP2K6

**Gene Alias**

MAPKK6, MEK6, MKK6, PRKMK6, SAPKK3

**Gene Description**

mitogen-activated protein kinase kinase 6

**Omim ID**

[601254](#)

**Gene Ontology**

[Hyperlink](#)

**Gene Summary**

This gene encodes a member of the dual specificity protein kinase family, which functions as a mitogen-activated protein (MAP) kinase kinase. MAP kinases, also known as extracellular signal-regulated kinases (ERKs), act as an integration point for multiple biochemical signals. This protein phosphorylates and activates p38 MAP kinase in response to inflammatory cytokines or environmental stress. As an essential component of p38 MAP kinase mediated signal transduction pathway, this gene is involved in many cellular processes such as stress induced cell cycle arrest, transcription activation and apoptosis. [provided by RefSeq]

**Other Designations**

protein kinase, mitogen-activated, kinase 6 (MAP kinase kinase 6)

## Pathway

- [Amyotrophic lateral sclerosis \(ALS\)](#)

- [Fc epsilon RI signaling pathway](#)
- [GnRH signaling pathway](#)
- [MAPK signaling pathway](#)
- [Toll-like receptor signaling pathway](#)

## Disease

- [Cardiovascular Diseases](#)
- [Diabetes Mellitus](#)
- [Edema](#)
- [Huntington disease](#)