

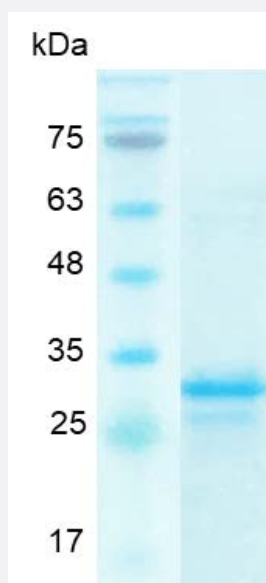
Bioactive

FGF13 (Human) Recombinant Protein

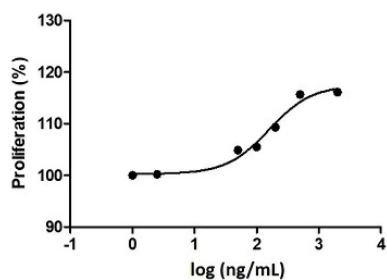
Catalog # P7850

Size 20 ug

Applications



SDS-PAGE analysis of FGF13 (Human) Recombinant Protein.



Result of activity analysis

Result of activity analysis

Specification

Product Description

Human FGF13 recombinant protein with polyhistidine tag at the C-terminus expressed in *Escherichia coli*.

Sequence

MAAAIASSLIRQKRQAREREKSNACKCVSSPSKGKTSCDKNKLNVFSRVKLFSGSKRRRRRPEP
QLKGIVTKLYSRQGYHLQLQADGTIDGTDEDDSTYTLFNLIPVGLRVVAIQGVQTKLYLAMNSEGYLY
TSELFTECKFKESVFENYYVTYSSMIYRQQQSGRGWYGLNKEGEIMKGNHVKKNKPAAHFLPK
PLKVAMYKEPSLHDLTEFSRSGSGTPTKSRVSGVLNGGKSMSHNEST with polyhistidine tag at the C-terminus.

Host	Escherichia coli
Form	Lyophilized
Preparation Method	<i>Escherichia coli</i> expression system
Purification	Ni-NTA chromatography
Purity	> 98% as determined by SDS-PAGE.
Endotoxin Level	< 0.1 EU/ ug of protein by the LAL method.
Activity	ED ₅₀ < 160 ng/mL, Measured by the induction of 3T3 cells proliferation.
Quality Control Testing	SDS-PAGE Stained with Coomassie Blue. SDS-PAGE analysis of FGF13 (Human) Recombinant Protein.
Recommend Usage	Biological Activity SDS-PAGE The optimal working dilution should be determined by the end user.
Storage Buffer	Lyophilized from a solution containing 1X PBS, pH 7.4. Reconstitute the lyophilized powder in ddH ₂ O to 100 ug/mL.
Storage Instruction	Lyophilized protein should be stored at -20°C. Protein aliquots should be stored at -20°C to -80°C. Th is product is stable for one year. Avoid repeated freeze/thaw cycles.
Note	Result of activity analysis Result of activity analysis

Applications

- Functional Study
- SDS-PAGE

Gene Info — FGF13

Entrez GeneID	2258
Gene Name	FGF13
Gene Alias	FGF2, FHF2
Gene Description	fibroblast growth factor 13

Omim ID [300070](#)

Gene Ontology [Hyperlink](#)

Gene Summary

The protein encoded by this gene is a member of the fibroblast growth factor (FGF) family. FGF family members possess broad mitogenic and cell survival activities, and are involved in a variety of biological processes, including embryonic development, cell growth, morphogenesis, tissue repair, tumor growth, and invasion. This gene is located in a region on chromosome X, which is associated with Borjeson-Forssman-Lehmann syndrome (BFLS), making it a possible candidate gene for familial cases of the BFLS, and for other syndromal and nonspecific forms of X-linked mental retardation mapping to this region. Alternative splicing of this gene at the 5' end results in several transcript variants encoding different isoforms with different N-termini. [provided by RefSeq]

Other Designations OTTHUMP00000024143|OTTHUMP00000024144|fibroblast growth factor homologous factor 2

Pathway

- [MAPK signaling pathway](#)
- [Melanoma](#)
- [Pathways in cancer](#)
- [Regulation of actin cytoskeleton](#)

Disease

- [Alzheimer disease](#)
- [Cardiovascular Diseases](#)
- [Diabetes Complications](#)
- [Metabolic Syndrome X](#)
- [Neoplasms](#)
- [Osteoporosis](#)