

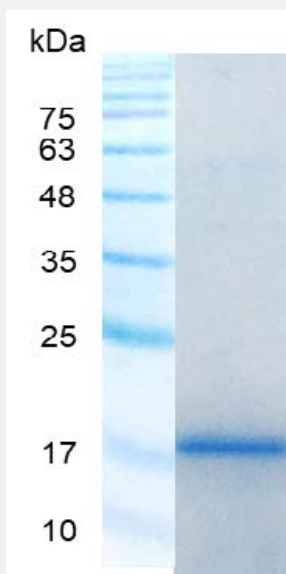
Bioactive

# LGALS7 (Human) Recombinant Protein

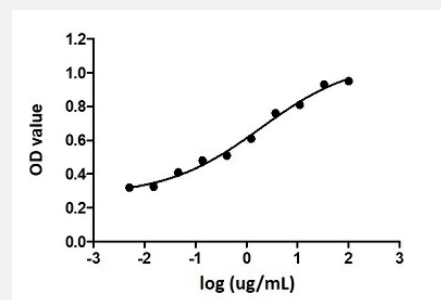
Catalog # P7835

Size 20 ug

## Applications



SDS-PAGE analysis of LGALS7 (Human) Recombinant Protein.



## Result of activity analysis

Result of activity analysis

## Specification

<b>Product Description</b>	Human LGALS7 recombinant protein with polyhistidine tag at the N-terminus expressed in <i>Escherichia coli</i> .
<b>Sequence</b>	SNVPHKSSLPEGIRPGTVLRIRGLVPPNASRFHVNLLCGEEQGSDAALHFNPRLDTSEVVFNSKE QGSWGREERGPGVPFQRGQPFEVLIASDDGFKAVVGDAQYHHFRHRLPLARVRLVEVGGDVQ LDSVRIF with polyhistidine tag at the Nterminus.
<b>Host</b>	Escherichia coli

Form	Lyophilized
Preparation Method	<i>Escherichia coli</i> expression system
Purification	Ni-NTA chromatography
Purity	> 98% as determined by SDS-PAGE.
Endotoxin Level	< 0.1 EU/ ug of protein by the LAL method.
Activity	ED <sub>50</sub> < 2 ug/mL, measured by the ability to agglutinate human red blood cells.
Quality Control Testing	SDS-PAGE Stained with Coomassie Blue. SDS-PAGE analysis of LGALS7 (Human) Recombinant Protein.
Recommend Usage	Biological Activity SDS-PAGE The optimal working dilution should be determined by the end user.
Storage Buffer	Lyophilized from a solution containing 1X PBS, pH 7.4. Reconstitute the lyophilized powder in ddH <sub>2</sub> O to 100 ug/mL.
Storage Instruction	Lyophilized protein should be stored at -20°C. Protein aliquots should be stored at -20°C to -80°C. The product is stable for one year. Avoid repeated freeze/thaw cycles.
Note	Result of activity analysis Result of activity analysis

## Applications

- Functional Study
- SDS-PAGE

## Gene Info — LGALS7

Entrez GeneID	<a href="#">3963</a>
Gene Name	LGALS7
Gene Alias	GAL7, LGALS7A
Gene Description	lectin, galactoside-binding, soluble, 7
Omim ID	<a href="#">600615</a>

**Gene Ontology**[Hyperlink](#)**Gene Summary**

The galectins are a family of beta-galactoside-binding proteins implicated in modulating cell-cell and cell-matrix interactions. Differential and in situ hybridization studies indicate that this lectin is specifically expressed in keratinocytes and found mainly in stratified squamous epithelium. A duplicate copy of this gene (GeneID:653499) is found adjacent to, but on the opposite strand on chromosome 19. [provided by RefSeq]

**Other Designations**

galectin 7|galectin-7