

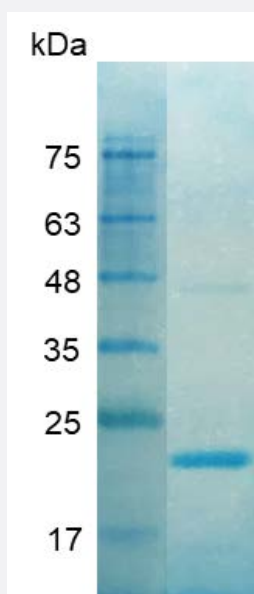
Bioactive

IL37 (Human) Recombinant Protein

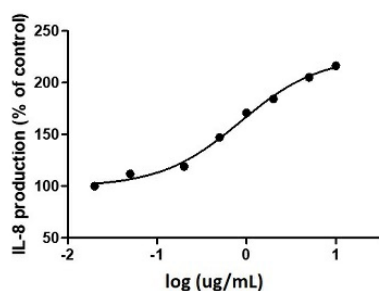
Catalog # P7822

Size 20 ug

Applications



SDS-PAGE analysis of IL37 (Human) Recombinant Protein.



Result of activity analysis

Result of activity analysis

Specification

Product Description

Human IL37 recombinant protein with polyhistidine tag at the C-terminus expressed in *Escherichia coli*.

Sequence

MKNLNPKKFSIHDQDQHKVLVLDSGNLIAVPDKNYRPEIFFALASSLSSASAEKGSPILLGVSKGEF
CLYCDKDKGQSHPSLQLKKEKLMKLAQKESARRPFIFYRAQVGSWNMLESAHPGWFICTSCN
CNEPVGVTDKFENRKHIEFSFQPVCKAEMSPSEVSD with polyhistidine tag at the C-terminus.

Host	Escherichia coli
Form	Lyophilized
Preparation Method	<i>Escherichia coli</i> expression system
Purification	Ni-NTA chromatography
Purity	> 95% as determined by SDS-PAGE.
Endotoxin Level	< 0.1 EU/ ug of protein by the LAL method.
Activity	ED ₅₀ < 0.9 ug/mL, Measured by the induction of IL-8 secretion in human PBMCs.
Quality Control Testing	SDS-PAGE Stained with Coomassie Blue. SDS-PAGE analysis of IL37 (Human) Recombinant Protein.
Recommend Usage	Biological Activity SDS-PAGE The optimal working dilution should be determined by the end user.
Storage Buffer	Lyophilized from a solution containing 1X PBS, pH 8.0. Reconstitute the lyophilized powder in ddH ₂ O to 100 ug/mL.
Storage Instruction	Lyophilized protein should be stored at -20°C. Protein aliquots should be stored at -20°C to -80°C. The product is stable for one year. Avoid repeated freeze/thaw cycles.
Note	Result of activity analysis Result of activity analysis

Applications

- Functional Study
- SDS-PAGE

Gene Info — IL1F7

Entrez GeneID	27178
Gene Name	IL1F7
Gene Alias	FIL1, FIL1(ZETA), FIL1Z, IL-1F7, IL-1H4, IL-1RP1, IL1H4, IL1RP1
Gene Description	interleukin 1 family, member 7 (zeta)

Omim ID [605510](#)

Gene Ontology [Hyperlink](#)

Gene Summary

The protein encoded by this gene is a member of the interleukin 1 cytokine family. This cytokine can bind to, and may be a ligand for interleukin 18 receptor (IL18R1/IL-1Rrp). This cytokine also binds to interleukin 18 binding protein (IL18BP), an inhibitory binding protein of interleukin 18 (IL18), and subsequently forms a complex with IL18 receptor beta subunit, and through which it inhibits the activity of IL18. This gene along with eight other interleukin 1 family genes form a cytokine gene cluster on chromosome 2. Five alternatively spliced transcript variants encoding distinct isoforms have been reported. [provided by RefSeq]

Other Designations

IL-1F7b (IL-1H4, IL-1H, IL-1RP1)|IL-1X protein|IL1F7 (canonical product IL-1F7b)|interleukin 1 family member 7|interleukin 1 family, member 7|interleukin 1, zeta|interleukin-1 homolog 4|interleukin-1 superfamily z|interleukin-1-related protein

Disease

- [Arthritis](#)
- [Genetic Predisposition to Disease](#)
- [Spondylitis](#)