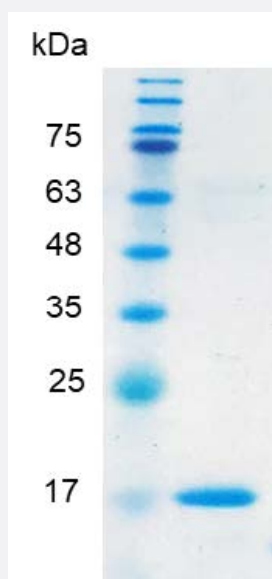


BMP8A (Human) Recombinant Protein

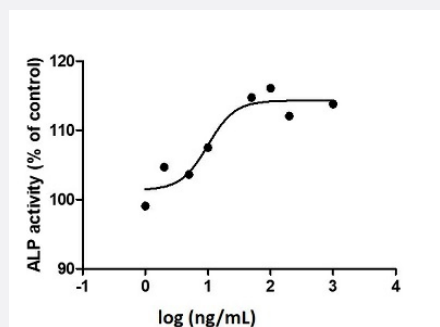
Catalog # P7798

Size 20 ug

Applications



SDS-PAGE analysis of BMP8A (Human) Recombinant Protein.



Result of activity analysis

Result of activity analysis

Specification

Product Description

Human BMP8A recombinant protein with polyhistidine tag at the C-terminus expressed in *Escherichia coli*.

Sequence

MAVRPLRRRQPKKSNELPQANRLPGIFDDVHGSHGRQVCRRHELYVSFQDLGWLDWVIAPQGY
SAYYCEGECFPLDSCMNATNHAILQSLVHLMKPNVAPKACCAPTKLSATSVLYYDSSNNVILRK
HRNMVVKACGCH with polyhistidine tag at the C-terminus.

Host

Escherichia coli

Specificity	23
Form	Lyophilized
Preparation Method	<i>Escherichia coli</i> expression system
Purification	Ni-NTA chromatography
Purity	> 98% as determined by SDS-PAGE.
Endotoxin Level	< 0.1 EU/ ug of protein by the LAL method.
Quality Control Testing	SDS-PAGE Stained with Coomassie Blue. SDS-PAGE analysis of BMP8A (Human) Recombinant Protein.
Recommend Usage	Biological Activity SDS-PAGE The optimal working dilution should be determined by the end user.
Storage Buffer	Lyophilized from a solution containing 20 mM sodium citrate, 0.2 M NaCl, pH 3.5. Reconstitute the lyophilized powder in ddH ₂ O to a concentration not less than 100 ug/mL.
Storage Instruction	Lyophilized protein should be stored at -20°C. Protein aliquots should be stored at -20°C to -80°C. The product is stable for one year. Avoid repeated freeze/thaw cycles.
Note	Result of activity analysis Result of activity analysis

Applications

- Functional Study
- SDS-PAGE

Gene Info — BMP8A

Entrez GeneID	353500
Gene Name	BMP8A
Gene Alias	FLJ14351, FLJ45264
Gene Description	bone morphogenetic protein 8a
Gene Ontology	Hyperlink

Other Designations

OTTHUMP00000010046|bone morphogenetic protein 8A

Pathway

- [Cytokine-cytokine receptor interaction](#)
- [Hedgehog signaling pathway](#)
- [TGF-beta signaling pathway](#)

Disease

- [Genetic Predisposition to Disease](#)
- [Hyperparathyroidism](#)