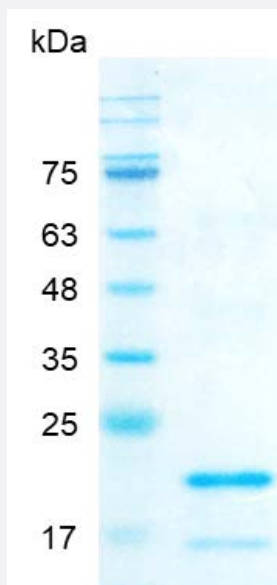


IL28B (Human) Recombinant Protein

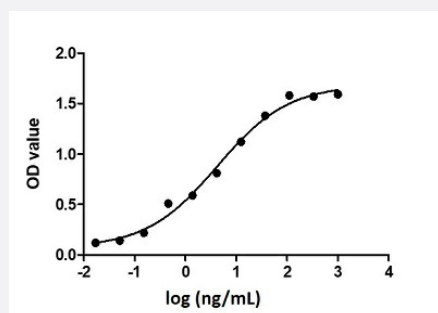
Catalog # P7794

Size 20 ug

Applications



SDS-PAGE analysis of IL28B (Human) Recombinant Protein.



Result of activity analysis

Result of activity analysis

Specification

Product Description

Human IL28B recombinant protein with polyhistidine tag at the C-terminus expressed in *Escherichia coli*.

Sequence

MVPVARLRGALPDARGCHIAQFKSLSPQELQAFKRAKDALEESLLLKDCKCRSLFPRTWDLRQLQVRERPVALEAELALTLKVLEATADTDPALGDVLDQPLHTLHHILSQLRACIQPQPTAGPRTGR LHHWLHRLQEAPKKESPGCLEASVTNLFRLLTRDLNCVASGDLCV with polyhistidine tag at the C-terminus.

Host

Escherichia coli

Specificity	23
Form	Lyophilized
Preparation Method	<i>Escherichia coli</i> expression system
Purification	Ni-NTA chromatography
Purity	> 95% as analyzed by SDS-PAGE.
Endotoxin Level	< 0.1 EU/ ug of protein by the LAL method.
Quality Control Testing	SDS-PAGE Stained with Coomassie Blue. SDS-PAGE analysis of IL28B (Human) Recombinant Protein.
Recommend Usage	Biological Activity SDS-PAGE The optimal working dilution should be determined by the end user.
Storage Buffer	Lyophilized from a solution containing 1X PBS, pH 8.0. Reconstitute the lyophilized powder in ddH ₂ O to a concentration not less than 100 ug/mL.
Storage Instruction	Lyophilized protein should be stored at -20°C. Protein aliquots should be stored at -20°C to -80°C. The product is stable for one year. Avoid repeated freeze/thaw cycles.
Note	Result of activity analysis Result of activity analysis

Applications

- Functional Study
- SDS-PAGE

Gene Info — IL28B

Entrez GeneID	282617
Gene Name	IL28B
Gene Alias	IFNL3, IL-28B, IL28C
Gene Description	interleukin 28B (interferon, lambda 3)
Omim ID	607402

Gene Ontology

[Hyperlink](#)

Gene Summary

This gene encodes a cytokine distantly related to type I interferons and the IL-10 family. This gene, interleukin 28A (IL28A), and interleukin 29 (IL29) are three closely related cytokine genes that form a cytokine gene cluster on a chromosomal region mapped to 19q13. Expression of the cytokines encoded by the three genes can be induced by viral infection. All three cytokines have been shown to interact with a heterodimeric class II cytokine receptor that consists of interleukin 10 receptor, beta (IL10RB) and interleukin 28 receptor, alpha (IL28RA). [provided by RefSeq]

Other Designations

interferon, lambda 3|interferon, lambda 4|interleukin 28B|interleukin 28C

Pathway

- [Cytokine-cytokine receptor interaction](#)
- [Jak-STAT signaling pathway](#)

Disease

- [Acute Disease](#)
- [Hepatitis B](#)
- [Hepatitis C](#)
- [HIV Infections](#)
- [Jaundice](#)
- [Recurrence](#)