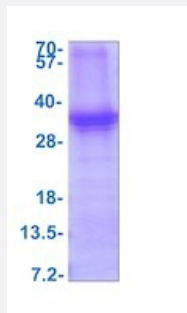


MAP2K6 (Human) Recombinant Protein

Catalog # P7792 Size 100 ug

Applications



SDS-PAGE analysis of MAP2K6 (Human) Recombinant Protein

Specification

| | |
|--------------------------------|--|
| Product Description | Human MAP2K6 (NP_002749, 53 a.a. - 314 a.a) partial recombinant protein with His tag expressed in <i>Escherichia coli</i> . |
| Sequence | MGSSHHHHHHSSGLVPRGSHMLEPIMELGRGAYGVVEKMRHVP SGQIMAVKRIRATVNSQEQKR LLMDLDISMRTVDCPFTVTFYGALFREGDVWICMELMDTSLDKFYKQVIDKGQTIPEDILGKIAVSIV KALEHLHSKLSVIHRDVKPSNVLINALGQVKMCDFGISGYLVDEVAKEIDAGCKPYMAPERINPEL NQKGYSVKSDIWSLGITMIELAILRFPYDSWGTPFQQLKQVVEEPPSPQLPADKFSAEFVDFTSQCL KKNSKERPTYELMQHPFF |
| Host | <i>Escherichia coli</i> |
| Theoretical MW (kDa) | 32 |
| Form | Liquid |
| Preparation Method | <i>Escherichia coli</i> expression system |
| Purity | > 85% by SDS-PAGE |
| Quality Control Testing | 3ug by SDS-PAGE under reducing condition and visualized by coomassie blue stain. SDS-PAGE analysis of MAP2K6 (Human) Recombinant Protein |
| Recommend Usage | SDS-PAGE Denatured The optimal working dilution should be determined by the end user. |

Storage Buffer

In 20mM Tris-HCl buffer, pH8.0 (10% glycerol).

Storage Instruction

Store at 2°C to 8°C for 1 week. For long term storage, aliquot and store at -20°C to -80°C.
Aliquot to avoid repeated freezing and thawing.

Applications

- SDS-PAGE

Gene Info — MAP2K6

Entrez GeneID[5608](#)**Protein Accession#**[P52564](#)**Gene Name**

MAP2K6

Gene Alias

MAPKK6, MEK6, MKK6, PRKMK6, SAPKK3

Gene Description

mitogen-activated protein kinase kinase 6

Omim ID[601254](#)**Gene Ontology**[Hyperlink](#)**Gene Summary**

This gene encodes a member of the dual specificity protein kinase family, which functions as a mitogen-activated protein (MAP) kinase kinase. MAP kinases, also known as extracellular signal-regulated kinases (ERKs), act as an integration point for multiple biochemical signals. This protein phosphorylates and activates p38 MAP kinase in response to inflammatory cytokines or environmental stress. As an essential component of p38 MAP kinase mediated signal transduction pathway, this gene is involved in many cellular processes such as stress induced cell cycle arrest, transcription activation and apoptosis. [provided by RefSeq]

Other Designations

protein kinase, mitogen-activated, kinase 6 (MAP kinase kinase 6)

Pathway

- [Amyotrophic lateral sclerosis \(ALS\)](#)
- [Fc epsilon RI signaling pathway](#)
- [GnRH signaling pathway](#)
- [MAPK signaling pathway](#)

- [Toll-like receptor signaling pathway](#)

Disease

- [Cardiovascular Diseases](#)
- [Diabetes Mellitus](#)
- [Edema](#)
- [Huntington disease](#)