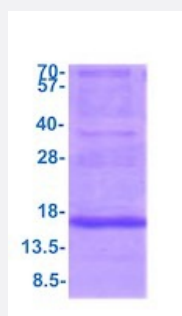


MRPS28 (Human) Recombinant Protein

Catalog # P7786

Size 500 ug

Applications



SDS-PAGE analysis of MRPS28 (Human) Recombinant Protein

Specification

Product Description	Human MRPS28 (NP_054737, 72 a.a. - 187 a.a) partial recombinant protein with His tag expressed in <i>Escherichia coli</i> .
Sequence	MGSSHHHHHHSSGLVPRGSHMGSGSPKNVESFASMLRHSPLTQMGPAKDKLVIGRIFHIVENDL YIDFGGKFHCVCCRPEVDGEKYQKGTRVRLRLDLELTSRFLGATD DTTVLEANAVLLGIQESKDS RSKEEHHEK
Host	<i>Escherichia coli</i>
Theoretical MW (kDa)	15.5
Form	Liquid
Preparation Method	<i>Escherichia coli</i> expression system
Purity	> 90% by SDS-PAGE
Quality Control Testing	3ug by SDS-PAGE under reducing condition and visualized by coomassie blue stain. SDS-PAGE analysis of MRPS28 (Human) Recombinant Protein
Recommend Usage	SDS-PAGE The optimal working dilution should be determined by the end user.
Storage Buffer	In PBS, pH 7.4 (1 mM DTT, 20% glycerol).

Storage Instruction

Store at 2°C to 8°C for 1 week. For long term storage, aliquot and store at -20°C to -80°C.
Aliquot to avoid repeated freezing and thawing.

Applications

- SDS-PAGE

Gene Info — MRPS28

Entrez GeneID [28957](#)

Protein Accession# [Q9Y2Q9](#)

Gene Name MRPS28

Gene Alias FLJ22853, HSPC007, MRP-S28, MRP-S35, MRPS35

Gene Description mitochondrial ribosomal protein S28

Gene Ontology [Hyperlink](#)

Gene Summary Mammalian mitochondrial ribosomal proteins are encoded by nuclear genes and help in protein synthesis within the mitochondrion. Mitochondrial ribosomes (mitoribosomes) consist of a small 28S subunit and a large 39S subunit. They have an estimated 75% protein to rRNA composition compared to prokaryotic ribosomes, where this ratio is reversed. Another difference between mammalian mitoribosomes and prokaryotic ribosomes is that the latter contain a 5S rRNA. Among different species, the proteins comprising the mitoribosome differ greatly in sequence, and sometimes in biochemical properties, which prevents easy recognition by sequence homology. This gene encodes a 28S subunit protein that has been called mitochondrial ribosomal protein S35 in the literature. [provided by RefSeq]

Other Designations mitochondrial 28S ribosomal protein S35