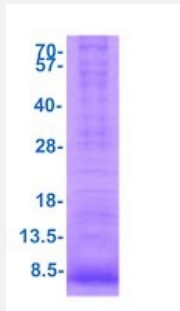


EREG (Human) Recombinant Protein

Catalog # P7773 Size 500 ug

Applications



SDS-PAGE analysis of EREG (Human) Recombinant Protein

Specification

Product Description	Human EREG (NP_001423, 63 a.a. - 108 a.a) partial recombinant protein with His tag expressed in <i>Escherichia coli</i> .
Sequence	MGSSHHHHHHSSGLVPRGSHMGSVSITKCSSDMNGYCLHGQCMLVDMSQNYCRCEVGYTGVR CEHFFL
Host	<i>Escherichia coli</i>
Theoretical MW (kDa)	7.7
Form	Liquid
Preparation Method	<i>Escherichia coli</i> expression system
Purity	> 80% by SDS-PAGE
Quality Control Testing	3ug by SDS-PAGE under reducing condition and visualized by coomassie blue stain. SDS-PAGE analysis of EREG (Human) Recombinant Protein
Recommend Usage	SDS-PAGE Denatured The optimal working dilution should be determined by the end user.
Storage Buffer	In 20mM Tris-HCl buffer, pH8.0 (10% glycerol).

Storage Instruction

Store at 2°C to 8°C for 1 week. For long term storage, aliquot and store at -20°C to -80°C.
Aliquot to avoid repeated freezing and thawing.

Applications

- SDS-PAGE

Gene Info — EREG

Entrez GeneID	2069
Protein Accession#	O14944
Gene Name	EREG
Gene Alias	ER
Gene Description	epiregulin
Omim ID	602061
Gene Ontology	Hyperlink
Gene Summary	Epiregulin is a member of the epidermal growth factor family. Epiregulin can function as a ligand of EGFR (epidermal growth factor receptor), as well as a ligand of most members of the ERBB (v-erb-b2 oncogene homolog) family of tyrosine-kinase receptors. [provided by RefSeq]
Other Designations	-

Pathway

- [ErbB signaling pathway](#)