

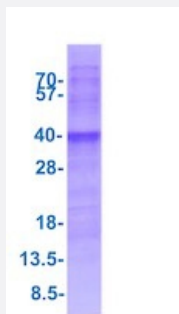
Full-Length

RPL7A (Human) Recombinant Protein

Catalog # P7736

Size 250 ug

Applications



SDS-PAGE analysis of RPL7A (Human) Recombinant Protein

Specification

Product Description	Human RPL7A (NP_000963, 1 a.a. - 266 a.a) full-length recombinant protein with His tag expressed in <i>Escherichia coli</i> .
Sequence	MGSSHHHHHSSGLVPRGSHMGSMKGGKAKGKKVAPAPAVVKKQEAKKVVNPLFEKRPKNF GIGQDIQPKRDLTRFVKWPRYRLQRQRAILYKRLKVPPAINQFTQALDRQTATQLLKLAKHYRPETK QEKKQRLARAEEKAAGKGDVPTKRPPVLRAGVNTVTTLVENKKAQLVIAHDVDPIELVVFLPA LCRKMGVPYCIKGGKARLGRVHRKTCTTVAFTQVNSDKGALAKLVEAIRTNYNDRYDEIRRHWG GNVLGPKSVARIAKLEKAKAKELATKLG
Host	<i>Escherichia coli</i>
Theoretical MW (kDa)	32.4
Form	Liquid
Preparation Method	<i>Escherichia coli</i> expression system
Concentration	1mg/mL
Purity	> 85% by SDS-PAGE
Quality Control Testing	3ug by SDS-PAGE under reducing condition and visualized by coomassie blue stain. SDS-PAGE analysis of RPL7A (Human) Recombinant Protein

Recommend Usage	SDS-PAGE Denatured The optimal working dilution should be determined by the end user.
Storage Buffer	In 20 mM Tris-HCl buffer, pH 8.0 (10% glycerol).
Storage Instruction	Store at 2°C to 8°C for 1 week. For long term storage, aliquot and store at -20°C to -80°C. Aliquot to avoid repeated freezing and thawing.

Applications

- SDS-PAGE

Gene Info — RPL7A

Entrez GeneID	6130
Protein Accession#	P62424
Gene Name	RPL7A
Gene Alias	SURF3, TRUP
Gene Description	ribosomal protein L7a
Omim ID	185640
Gene Ontology	Hyperlink

Gene Summary	<p>Cytoplasmic ribosomes, organelles that catalyze protein synthesis, consist of a small 40S subunit and a large 60S subunit. Together these subunits are composed of 4 RNA species and approximately 80 structurally distinct proteins. This gene encodes a ribosomal protein that is a component of the 60S subunit. The protein belongs to the L7AE family of ribosomal proteins. It can interact with a subclass of nuclear hormone receptors, including thyroid hormone receptor, and inhibit their ability to transactivate by preventing their binding to their DNA response elements. This gene is included in the surfait gene cluster, a group of very tightly linked genes that do not share sequence similarity. It is co-transcribed with the U24, U36a, U36b, and U36c small nucleolar RNA genes, which are located in its second, fifth, fourth, and sixth introns, respectively. This gene rearranges with the trk proto-oncogene to form the chimeric oncogene trk-2h, which encodes an oncoprotein consisting of the N terminus of ribosomal protein L7a fused to the receptor tyrosine kinase domain of trk. As is typical for genes encoding ribosomal proteins, there are multiple processed pseudogenes of this gene dispersed through the genome. [provided by RefSeq]</p>
---------------------	---

Other Designations	60S ribosomal protein L7a OTTHUMP00000022469 PLA-X polypeptide surfait 3 surfait locus protein 3 thyroid hormone receptor uncoupling protein
---------------------------	--

Pathway

- [Ribosome](#)

Disease

- [Cardiovascular Diseases](#)
- [Diabetes Mellitus](#)
- [Edema](#)