

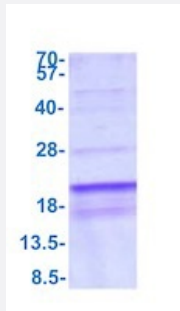
Full-Length

SDHAF1 (Human) Recombinant Protein

Catalog # P7729

Size 100 ug

Applications



SDS-PAGE analysis of SDHAF1 (Human) Recombinant Protein

Specification

Product Description	Human SDHAF1 (NP_001036096, 1 a.a. - 115 a.a) full-length recombinant protein with His tag expressed in <i>Escherichia coli</i> .
Sequence	MGSSHHHHHHSSGLVPRGSHMGMSRHSRLQRQVLSLYRDLLRAGRGKPGAEARVRAEFRQH AGLPRSDVLRIEYLYRRGRRQLQLLRSGHATAMGAFVRPRAPTGEPGGVGSQPDDGDSPRNPH DSTGAPETRPDGR
Host	<i>Escherichia coli</i>
Theoretical MW (kDa)	15.2
Form	Liquid
Preparation Method	<i>Escherichia coli</i> expression system
Concentration	0.25mg/mL
Purity	> 85% by SDS-PAGE
Quality Control Testing	3ug by SDS-PAGE under reducing condition and visualized by coomassie blue stain. SDS-PAGE analysis of SDHAF1 (Human) Recombinant Protein
Recommend Usage	SDS-PAGE The optimal working dilution should be determined by the end user.

Storage Buffer

In PBS, pH 7.4 (0.1mM PMSF, 2 mM DTT, 30% glycerol).

Storage Instruction

Store at 2°C to 8°C for 1 week. For long term storage, aliquot and store at -20°C to -80°C.
Aliquot to avoid repeated freezing and thawing.

Applications

- SDS-PAGE

Gene Info — LOC644096

Entrez GeneID[644096](#)**Protein Accession#**[A6NFY7](#)**Gene Name**

LOC644096

Gene Alias

-

Gene Description

hypothetical protein LOC644096

Gene Ontology[Hyperlink](#)**Gene Summary**

The succinate dehydrogenase (SDH) complex, or complex II of the mitochondrial respiratory chain , is composed of 4 individual subunits (see SDHA, MIM 600857). SDHAF1 is essential for SDH assembly but does not physically associate with the complex in vivo (Ghezzi et al., 2009).[supplied by OMIM]

Other Designations

-