

Bioactive

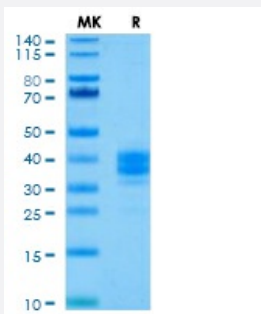
HuPro®

EPCAM (Human) Recombinant Protein

Catalog # P7649

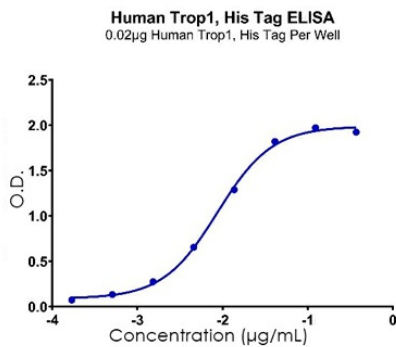
Size 100 ug

Applications



Result of bioactivity analysis

Result of bioactivity analysis



Specification

Product Description	Human EPCAM (P16422, 24 a.a. - 245 a.a.) partial recombinant protein with His tag at C-terminus expressed in Expi293 cells.
Host	Mammals
Theoretical MW (kDa)	30-45
Form	Lyophilized
Preparation Method	Mammalian cell (Expi293) expression system
Purity	> 95% by SDS-PAGE

Endotoxin Level	< 1 EU per 1 ug of protein (determined by LAL method)
Activity	Immobilized Human EpCAM at 0.2 ug/mL (100 uL/Well). Dose response curve for Anti-Trop1 Ab with the EC ₅₀ of 8.7 ng/mL determined by ELISA.
Quality Control Testing	SDS-PAGE under reducing condition
Storage Buffer	Lyophilized from sterile distilled Water up to 100 ug/mL
Storage Instruction	Store at -20 or -80°C. Aliquot to avoid repeated freezing and thawing.
Note	Result of bioactivity analysis Result of bioactivity analysis

Applications

- Functional Study
- SDS-PAGE

Gene Info — EPCAM

Entrez GeneID	4072
Protein Accession#	P16422
Gene Name	EPCAM
Gene Alias	17-1A, 323/A3, CD326, CO-17A, CO17-1A, EGP, EGP-2, EGP34, EGP40, ESA, Ep-CAM, GA7 33-2, HEA125, KS1/4, KSA, M4S1, MH99, MIC18, MK-1, MOC31, TACST-1, TACSTD1, TROP 1, hEGP-2
Gene Description	epithelial cell adhesion molecule
Omim ID	185535
Gene Ontology	Hyperlink
Gene Summary	This gene encodes a carcinoma-associated antigen and is a member of a family that includes at least two type I membrane proteins. This antigen is expressed on most normal epithelial cells and gastrointestinal carcinomas and functions as a homotypic calcium-independent cell adhesion molecule. The antigen is being used as a target for immunotherapy treatment of human carcinomas. Mutations in this gene result in congenital tufting enteropathy. [provided by RefSeq]

Other Designations

adenocarcinoma-associated antigen|carcinoma-associated antigen GA733-2|human epithelial glycoprotein-2|membrane component, chromosome 4, surface marker (35kD glycoprotein)|tumor-associated calcium signal transducer 1

Disease

- [Genetic Predisposition to Disease](#)
- [Ovarian Neoplasms](#)