

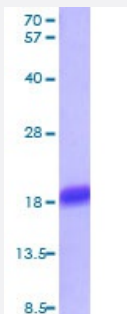
Bioactive

IL1B (Canine) Recombinant Protein

Catalog # P6983

Size 100 ug

Applications



Result of bioactivity analysis

Result of bioactivity analysis

IL1B (Canine) Recombinant Protein (Cat # P6983) stimulates cell proliferation of the D10.G4.1 mouse helper T cells. The ED50 range range ≤ 5 pg/mL.

Specification

Product Description	Canine IL1B (NP_001033060.1, 114 a.a. - 265 a.a.) partial recombinant protein expressed in <i>Escherichia coli</i> .
Host	Escherichia coli
Theoretical MW (kDa)	17.5
Form	Liquid
Preparation Method	<i>Escherichia coli</i> expression system
Purity	> 95% by SDS-PAGE
Endotoxin Level	< 1 EU per 1 ug of protein (determined by LAL method).

Activity	Measured in a cell proliferation assay using D10.G4.1 mouse helper T cells. The ED ₅₀ range ≤ 5pg/mL.
Quality Control Testing	3 ug by SDS-PAGE under reducing condition and visualized by coomassie blue stain.
Recommend Usage	Bioactivity SDS-PAGE The optimal working dilution should be determined by the end user.
Storage Buffer	In PBS, pH 7.4.
Storage Instruction	Store at 2°C to 8°C for 1 week. For long term storage, aliquot and store at -20°C to -80°C. Aliquot to avoid repeated freezing and thawing.
Note	Result of bioactivity analysis Result of bioactivity analysis IL1B (Canine) Recombinant Protein (Cat # P6983) stimulates cell proliferation of the D10.G4.1 mouse helper T cells. The ED50 range range ≤ 5 pg/mL.

Applications

- SDS-PAGE

Gene Info — IL1B

Entrez GeneID	403974
Protein Accession#	NP_001033060.1
Gene Name	IL1B
Gene Alias	IL-1
Gene Description	interleukin 1, beta
Gene Ontology	Hyperlink
Gene Summary	interleukin-1 beta proprotein
Other Designations	interleukin-1 beta proprotein