

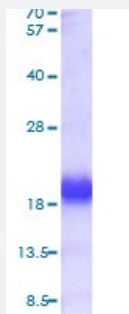
Bioactive

CSF2 (Porcine) Recombinant Protein

Catalog # P6979

Size 100 ug

Applications



Result of bioactivity analysis

Result of bioactivity analysis

CSF2 (Pig) Recombinant Protein (Cat # P6979) stimulates cell proliferation of the TF-1 human erythroleukemic cells. The ED50 range ≤ 40 ng/mL.

Specification

Product Description	Porcine CSF2 (NP_999283, 18 a.a. - 144 a.a.) partial recombinant protein with His tag expressed in <i>Escherichia coli</i> .
Host	<i>Escherichia coli</i>
Theoretical MW (kDa)	16.6
Form	Liquid
Preparation Method	<i>Escherichia coli</i> expression system
Purity	> 95% by SDS-PAGE
Endotoxin Level	< 1 EU per 1 ug of protein (determined by LAL method).

Activity	Measured in a cell proliferation assay using TF-1 human erythroleukemic cells. The ED ₅₀ range ≤ 40 ng/mL.
Quality Control Testing	3 ug by SDS-PAGE under reducing condition and visualized by coomassie blue stain.
Recommend Usage	Bioactivity SDS-PAGE The optimal working dilution should be determined by the end user.
Storage Buffer	In PBS, pH 7.4.
Storage Instruction	Store at 2°C to 8°C for 1 week. For long term storage, aliquot and store at -20°C to -80°C. Aliquot to avoid repeated freezing and thawing.
Note	Result of bioactivity analysis Result of bioactivity analysis CSF2 (Pig) Recombinant Protein (Cat # P6979) stimulates cell proliferation of the TF-1 human erythroleukemic cells. The ED50 range ≤ 40 ng/mL.

Applications

- SDS-PAGE

Gene Info — CSF2

Entrez GeneID	397208
Protein Accession#	NP_999283
Gene Name	CSF2
Gene Alias	GM-CSF
Gene Description	colony stimulating factor 2 (granulocyte-macrophage)
Gene Ontology	Hyperlink
Other Designations	colony stimulating factor 2 granulocyte-macrophage colony-stimulating factor