

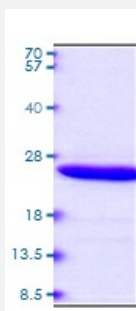
Bioactive

## Prl (Mouse) Recombinant Protein

Catalog # P6959

Size 20 ug

### Applications



### Result of bioactivity analysis

Result of bioactivity analysis

Prl (Mouse) Recombinant Protein stimulates cell proliferation of the Nb2-11 rat lymphoma cells. The ED50 range  $\leq 3$  ng/mL.

### Specification

Product Description	Mouse Prl(NP_035294, 30 a.a. - 228a.a.) partial recombinant protein expressed in <i>Escherichia coli</i> .
Host	Mouse
Theoretical MW (kDa)	22.7
Form	Liquid
Preparation Method	<i>Escherichia coli</i> expression system
Purity	> 90% by SDS-PAGE
Endotoxin Level	> 1 EU per 1ug of protein (determined by LAL method)

Activity	Measured in a cell proliferation assay using Nb2-11 rat lymphoma cells. The ED <sub>50</sub> range ≤ 3 ng/ml.
Quality Control Testing	3ug by SDS-PAGE under reducing condition and visualized by coomassie blue stain.
Recommend Usage	SDS-PAGE The optimal working dilution should be determined by the end user.
Storage Buffer	In PBS, pH 7.4
Storage Instruction	Stored at 2°C to 8°C for 1 week. For long term storage, aliquot and store at -20°C to -80°C. Avoid repeated freezing and thawing cycles.
Note	Result of bioactivity analysis Result of bioactivity analysis Prl (Mouse) Recombinant Protein stimulates cell proliferation of the Nb2-11 rat lymphoma cells. The ED50 range ≤ 3 ng/mL.

## Applications

- SDS-PAGE

## Gene Info — Prl

Entrez GeneID	<a href="#">19109</a>
Protein Accession#	<a href="#">NP_035294</a>
Gene Name	Prl
Gene Alias	AV290867, Prl1a1
Gene Description	prolactin
Gene Ontology	<a href="#">Hyperlink</a>
Other Designations	-