

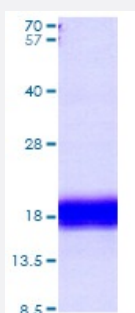
Bioactive

Kitl (Mouse) Recombinant Protein

Catalog # P6943

Size 20 ug

Applications



3 ug SDS-PAGE under reducing condition and visualized by coomassie blue stain.

Result of bioactivity analysis

Result of bioactivity analysis

Specification

Product Description	Mouse Kitl (NP_038626, 26 - 189 a.a.) partial length recombinant protein expressed in <i>Escherichia coli</i> expression system.
Host	<i>Escherichia coli</i>
Theoretical MW (kDa)	18
Form	Liquid
Preparation Method	<i>Escherichia coli</i> expression system
Purity	> 95% by SDS-PAGE
Endotoxin Level	< 1 EU/ug

Activity	Mouse SCF/c-kit Ligand stimulates cell proliferation of the MC/9 mouse mast cells. The ED ₅₀ range ≤ 7 ng/mL.
Quality Control Testing	SDS-PAGE Stained with Coomassie Blue 3 ug SDS-PAGE under reducing condition and visualized by coomassie blue stain.
Recommend Usage	SDS-PAGE The optimal working dilution should be determined by the end user.
Storage Buffer	In PBS, pH 7.4 (10% glycerol)
Storage Instruction	Store at 4°C for one week. For long term storage store at -20°C. Aliquot to avoid repeated freezing and thawing.
Note	Result of bioactivity analysis Result of bioactivity analysis

Applications

- SDS-PAGE

Gene Info — Kitl

Entrez GeneID	17311
Protein Accession#	P20826
Gene Name	Kitl
Gene Alias	Clo, Con, Gb, Kitlg, Mgf, SCF, SF, SLF, SI, Steel, contrasted
Gene Description	kit ligand
Gene Ontology	Hyperlink
Other Designations	OTTMUSP00000022753 Steel factor cloud gray grizzle-belly mast cell growth factor stem cell fact or