

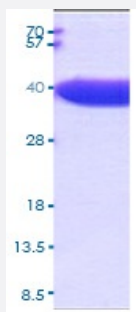
Bioactive

## ampC (*Escherichia coli*) Recombinant Protein

Catalog # P6822

Size 20 ug

### Applications



15% SDS-PAGE under reducing condition and visualized by coomassie blue stain.

### Specification

<b>Product Description</b>	<i>Escherichia coli</i> Beta-lactamase protein (NP_418574, 20 a.a.-377 a.a.) partial recombinant protein with His tag expressed in <i>Escherichia coli</i> .
<b>Host</b>	<i>Escherichia coli</i>
<b>Theoretical MW (kDa)</b>	41.8
<b>Form</b>	Liquid
<b>Preparation Method</b>	<i>Escherichia coli</i> expression system
<b>Purity</b>	> 95% by SDS-PAGE
<b>Activity</b>	Specific activity is > 700 units/mg, in which one unit will hydrolyze 1.0umole of Nitrocefin per minute at pH 7.0 at 37°C.
<b>Quality Control Testing</b>	15% SDS-PAGE under reducing condition and visualized by coomassie blue stain. 15% SDS-PAGE under reducing condition and visualized by coomassie blue stain.
<b>Recommend Usage</b>	SDS-PAGE The optimal working dilution should be determined by the end user.
<b>Storage Buffer</b>	In 20 mM Tris-HCl, pH 8.0 (10% glycerol)

**Storage Instruction**

Store at -20°C. For long term storage store at -80°C.  
Aliquot to avoid repeated freezing and thawing.

## Applications

- SDS-PAGE

## Gene Info — ampC

<b>Entrez GeneID</b>	<a href="#">948669</a>
----------------------	------------------------

<b>Protein Accession#</b>	<a href="#">P00811</a>
---------------------------	------------------------

<b>Gene Name</b>	ampC
------------------	------

<b>Gene Alias</b>	ECK4146, JW4111, ampA
-------------------	-----------------------

<b>Gene Description</b>	beta-lactamase/D-alanine carboxypeptidase
-------------------------	---

<b>Gene Ontology</b>	<a href="#">Hyperlink</a>
----------------------	---------------------------

<b>Other Designations</b>	-
---------------------------	---