

Bioactive

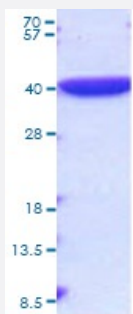
Full-Length

# IdhA (*Escherichia coli*) Recombinant Protein

Catalog # P6800

Size 20 ug

## Applications



15% SDS-PAGE Stained with Coomassie Blue.

## Specification

<b>Product Description</b>	<i>Escherichia coli</i> IdhA (NP_415898, 1 a.a. - 329 a.a) full length recombinant protein with His tag expressed in <i>Escherichia coli</i> .
<b>Host</b>	<i>Escherichia coli</i>
<b>Theoretical MW (kDa)</b>	39.1
<b>Form</b>	Liquid
<b>Preparation Method</b>	<i>Escherichia coli</i> expression system
<b>Purity</b>	> 95% by SDS-PAGE
<b>Activity</b>	Specific activity is > 200 unit/mg, in which one unit will convert 1.0 umole of pyruvate to L-lactate and beta-NAD per minute at pH 7.5 at 37°C.
<b>Quality Control Testing</b>	SDS-PAGE Stained with Coomassie Blue 15% SDS-PAGE Stained with Coomassie Blue.
<b>Recommend Usage</b>	SDS-PAGE The optimal working dilution should be determined by the end user.
<b>Storage Buffer</b>	In 20 mM Tris-HCl, 100 mM NaCl, pH 8.0 (10% glycerol)

**Storage Instruction**

Store at -20°C. For long term storage store at -80°C.  
Aliquot to avoid repeated freezing and thawing.

## Applications

- SDS-PAGE

## Gene Info — IdhA

Entrez GeneID	<a href="#">946315</a>
---------------	------------------------

Protein Accession#	<a href="#">P52643</a>
--------------------	------------------------

Gene Name	IdhA
-----------	------

Gene Alias	ECK1377, JW1375, hslF, hslI, htpH
------------	-----------------------------------

Gene Description	fermentative D-lactate dehydrogenase, NAD-dependent
------------------	---

Gene Ontology	<a href="#">Hyperlink</a>
---------------	---------------------------

Gene Summary	-
--------------	---

Other Designations	-
--------------------	---