

Bioactive

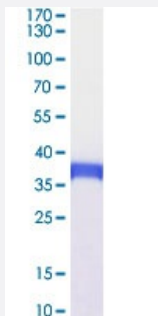
HuPro®

# SIGLEC15 (Human) Recombinant Protein

Catalog # P6793

Size 100 ug

## Applications



SIGLEC15 (Human) Recombinant Protein (Cat # P6793) was determined by SDS-PAGE with Coomassie Blue, showing a band at 36-38 kDa.

## Result of activity analysis

Result of activity analysis

## Specification

<b>Product Description</b>	Human SIGLEC15 (NP_998767.1, 20 a.a. - 263 a.a.) partial recombinant protein with 6x His tag at C-terminal expressed in HEK293 cells.
<b>Host</b>	Human
<b>Form</b>	Lyophilized
<b>Preparation Method</b>	Mammalian cell (HEK293) expression system
<b>Purification</b>	Ni-sepharose purification
<b>Purity</b>	> 95% by SDS-PAGE
<b>Endotoxin Level</b>	< 1.0 EU/ug of the protein by LAL method.

Activity	Measured by the ability to inhibit Anti-CD3-induced proliferation of jurkat cells. The ED <sub>50</sub> for this effect is 4.99-19.98 ug/mL.
Quality Control Testing	SDS-PAGE Stained with Coomassie Blue SIGLEC15 (Human) Recombinant Protein (Cat # P6793) was determined by SDS-PAGE with Coomassie Blue, showing a band at 36-38 kDa.
Recommend Usage	SDS-PAGE The optimal working dilution should be determined by the end user.
Storage Buffer	Lyophilized from PBS, 300 mM NaCl, pH 7.4.
Storage Instruction	Store the lyophilized protein at -20°C to -80°C for long term. After reconstitution to a concentration of 0.1-0.5 mg/mL in sterile distilled water, the protein solution is stable at -20°C for 3 months, at 2-8°C for up to 1 week. Aliquot to avoid repeated freezing and thawing.
Note	Result of activity analysis Result of activity analysis

## Applications

- SDS-PAGE

## Gene Info — SIGLEC15

Entrez GeneID	<a href="#">284266</a>
Protein Accession#	<a href="#">NP_998767.1</a>
Gene Name	SIGLEC15
Gene Alias	CD33L3, HsT1361, SIGLEC-15
Gene Description	sialic acid binding Ig-like lectin 15
Gene Ontology	<a href="#">Hyperlink</a>
Other Designations	CD33 antigen-like 3 CD33 molecule-like 3