

Bioactive

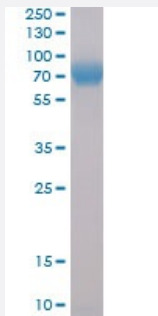
HuPro®

## CD276 (Human) Recombinant Protein

Catalog # P6786

Size 100 ug

### Applications



CD276 (Human) Recombinant Protein (Cat # P6786) was determined by SDS-PAGE with Coomassie Blue, showing a band at 70-75 kDa.

### Result of activity analysis

Result of activity analysis

### Specification

<b>Product Description</b>	Human CD276 (Q5ZPR3-2, Leu 29 - Pro 245 ; Pro 99 - Lys 330) partial recombinant protein with Fc, His tag at C-terminal expressed in HEK293 cells.
<b>Host</b>	Human
<b>Form</b>	Lyophilized
<b>Preparation Method</b>	Mammalian cell (HEK293) expression system
<b>Purification</b>	Ni-sepharose purification
<b>Purity</b>	> 95% by SDS-PAGE

Activity	ELISA plate pre-coated by 2 ug/mL (100 uL/well) CD276 (Human) Recombinant Protein (Cat # P6786), mFc-His tagged protein can bind Anti-B7-H3 Neutralizing antibody in a linear range of 0.24-31.25 ng/mL.
Quality Control Testing	SDS-PAGE Stained with Coomassie Blue CD276 (Human) Recombinant Protein (Cat # P6786) was determined by SDS-PAGE with Coomassie Blue, showing a band at 70-75 kDa.
Recommend Usage	SDS-PAGE The optimal working dilution should be determined by the end user.
Storage Buffer	Lyophilized from PBS, pH 7.4 (5% - 19% Trehalose)
Storage Instruction	Store the lyophilized protein at -20°C to -80°C for long term. After reconstitute with deionized water, the protein solution is stable at -20°C for 3 months, at 2-8°C for up to 1 week. Aliquot to avoid repeated freezing and thawing.
Note	Result of activity analysis Result of activity analysis

## Applications

- SDS-PAGE

## Gene Info — CD276

Entrez GeneID	<a href="#">80381</a>
Protein Accession#	<a href="#">Q5ZPR3</a>
Gene Name	CD276
Gene Alias	B7-H3, B7H3
Gene Description	CD276 molecule
Omim ID	<a href="#">605715</a>
Gene Ontology	<a href="#">Hyperlink</a>
Gene Summary	Costimulatory B7 molecules (e.g., B7-1, or CD80; MIM 112203) signal through CD28 (MIM 186760) family molecules such as CD28, CTLA4 (MIM 123890), and ICOS (MIM 604558).[supplied by OMIM]
Other Designations	B7 homolog 3 CD276 antigen

## Pathway

- [Cell adhesion molecules \(CAMs\)](#)