

Bioactive

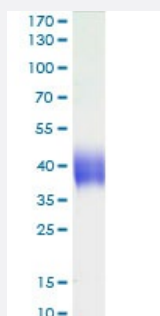
HuPro®

## CD276 (Human) Recombinant Protein

Catalog # P6785

Size 100 ug

### Applications



CD276 (Human) Recombinant Protein (Cat # P6785) was determined by SDS-PAGE with Coomassie Blue, showing a band at 38-48 kDa.

### Result of activity analysis

Result of activity analysis

### Specification

<b>Product Description</b>	Human CD276 (NP_079516, 29 a.a. - 245 a.a.) partial recombinant protein with 6x His tag at C-terminal expressed in HEK293 cells.
<b>Host</b>	Human
<b>Form</b>	Lyophilized
<b>Preparation Method</b>	Mammalian cell (HEK293) expression system
<b>Purification</b>	Ni-sepharose purification
<b>Purity</b>	> 95% by SDS-PAGE
<b>Endotoxin Level</b>	< 0.1 EU/ug of the protein by LAL method.

<b>Activity</b>	Measured by the binding ability in a functional ELISA. Immobilized CD276 (Human) Recombinant Protein (Cat # P6785) at 2 ug/mL (100 uL/well) can bind Anti-Human B7-H3 Antibody with a linear range of 1-4 ng/mL.
<b>Quality Control Testing</b>	SDS-PAGE Stained with Coomassie Blue CD276 (Human) Recombinant Protein (Cat # P6785) was determined by SDS-PAGE with Coomassie Blue, showing a band at 38-48 kDa.
<b>Recommend Usage</b>	SDS-PAGE The optimal working dilution should be determined by the end user.
<b>Storage Buffer</b>	Lyophilized from PBS, pH 7.4.
<b>Storage Instruction</b>	Store the lyophilized protein at -20°C to -80°C for long term. After reconstitution to a concentration of 0.1-0.5 mg/mL in sterile distilled water, the protein solution is stable at -20°C for 3 months, at 2-8°C for up to 1 week. Aliquot to avoid repeated freezing and thawing.
<b>Note</b>	Result of activity analysis Result of activity analysis

## Applications

- SDS-PAGE

## Gene Info — CD276

<b>Entrez GeneID</b>	<a href="#">80381</a>
<b>Protein Accession#</b>	<a href="#">NP_079516</a>
<b>Gene Name</b>	CD276
<b>Gene Alias</b>	B7-H3, B7H3
<b>Gene Description</b>	CD276 molecule
<b>Omim ID</b>	<a href="#">605715</a>
<b>Gene Ontology</b>	<a href="#">Hyperlink</a>
<b>Gene Summary</b>	Costimulatory B7 molecules (e.g., B7-1, or CD80; MIM 112203) signal through CD28 (MIM 186760) family molecules such as CD28, CTLA4 (MIM 123890), and ICOS (MIM 604558).[supplied by OMIM]
<b>Other Designations</b>	B7 homolog 3 CD276 antigen

## Pathway

- [Cell adhesion molecules \(CAMs\)](#)