

Bioactive

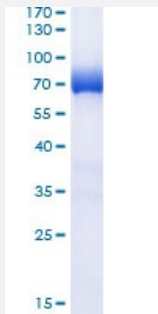
HuPro®

## PDCD1LG2 (Human) Recombinant Protein

Catalog # P6784

Size 100 ug

### Applications



PDCD1LG2 (Human) Recombinant Protein (Cat # P6784) was determined by SDS-PAGE with Coomassie Blue, showing a band at 70 kDa.

### Result of activity analysis

Result of activity analysis

### Specification

<b>Product Description</b>	Human PDCD1LG2 (NP_079515.2, 20 a.a. - 219 a.a.) partial recombinant protein with Fc, 6x His tag at C-terminal expressed in HEK293 cells.
<b>Host</b>	Human
<b>Form</b>	Lyophilized
<b>Preparation Method</b>	Mammalian cell (HEK293) expression system
<b>Purification</b>	Ni-sepharose purification
<b>Purity</b>	> 95% by SDS-PAGE
<b>Endotoxin Level</b>	< 0.1 EU/ug of the protein by LAL method.

<b>Activity</b>	Measured by the binding ability in a functional ELISA. Immobilized Recombinant Human PD-1 at 5 u g/mL (100 uL/well) can bind PDCD1LG2 (Human) Recombinant Protein (Cat # P6784) with a linear range of 0.06-0.24 ug/mL.
<b>Quality Control Testing</b>	SDS-PAGE Stained with Coomassie Blue PDCD1LG2 (Human) Recombinant Protein (Cat # P6784) was determined by SDS-PAGE with Coomassie Blue, showing a band at 70 kDa.
<b>Recommend Usage</b>	SDS-PAGE The optimal working dilution should be determined by the end user.
<b>Storage Buffer</b>	Lyophilized from PBS, pH 7.4.
<b>Storage Instruction</b>	Store the lyophilized protein at -20°C to -80°C for long term. After reconstitution to a concentration of 0.1-0.5 mg/mL in sterile distilled water, the protein solution is stable at -20°C for 3 months, at 2-8°C for up to 1 week. Aliquot to avoid repeated freezing and thawing.
<b>Note</b>	Result of activity analysis Result of activity analysis

## Applications

- SDS-PAGE

## Gene Info — PDCD1LG2

<b>Entrez GeneID</b>	<a href="#">80380</a>
<b>Protein Accession#</b>	<a href="#">NP_079515.2</a>
<b>Gene Name</b>	PDCD1LG2
<b>Gene Alias</b>	B7DC, Btdc, CD273, MGC142238, MGC142240, PD-L2, PDCD1L2, PDL2, bA574F11.2
<b>Gene Description</b>	programmed cell death 1 ligand 2
<b>Omim ID</b>	<a href="#">605723</a>
<b>Gene Ontology</b>	<a href="#">Hyperlink</a>
<b>Other Designations</b>	OTTHUMP00000021030 PD-1-ligand 2 programmed death ligand 2

## Pathway

- [Cell adhesion molecules \(CAMs\)](#)

## Disease

- [Colorectal Neoplasms](#)
- [Diabetes Mellitus](#)
- [Genetic Predisposition to Disease](#)
- [Graves Disease](#)