

Bioactive

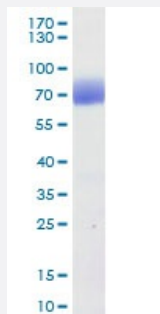
HuPro®

SLAMF7 (Human) Recombinant Protein

Catalog # P6781

Size 100 ug

Applications



SLAMF7 (Human) Recombinant Protein (Cat # P6781) was determined by SDS-PAGE with Coomassie Blue, showing a band at 60-70 kDa.

Result of activity analysis

Result of activity analysis

Specification

Product Description	Human SLAMF7 (NP_067004.3, 23 a.a. - 226 a.a.) partial recombinant protein with Fc, 6x His tag at C-terminal expressed in HEK293 cells.
Host	Human
Form	Lyophilized
Preparation Method	Mammalian cell (HEK293) expression system
Purification	Ni-sepharose purification
Purity	> 95% by SDS-PAGE
Endotoxin Level	< 0.1 EU/ug of the protein by LAL method.

Activity	Measured by the binding ability in a functional ELISA. Immobilized SLAMF7 (Human) Recombinant Protein (Cat # P6781) at 2 ug/mL (100 uL/well) can bind Anti-SLAMF7 antibody with a linear range of 60-150 ng/mL.
Quality Control Testing	SDS-PAGE Stained with Coomassie Blue SLAMF7 (Human) Recombinant Protein (Cat # P6781) was determined by SDS-PAGE with Coomassie Blue, showing a band at 60-70 kDa.
Recommend Usage	SDS-PAGE The optimal working dilution should be determined by the end user.
Storage Buffer	Lyophilized from PBS, pH 7.4.
Storage Instruction	Store the lyophilized protein at -20°C to -80°C for long term. After reconstitution to a concentration of 0.1-0.5 mg/mL in sterile distilled water, the protein solution is stable at -20°C for 3 months, at 2-8°C for up to 1 week. Aliquot to avoid repeated freezing and thawing.
Note	Result of activity analysis Result of activity analysis

Applications

- SDS-PAGE

Gene Info — SLAMF7

Entrez GeneID	57823
Protein Accession#	NP_067004.3
Gene Name	SLAMF7
Gene Alias	19A, CD319, CRACC, CS1
Gene Description	SLAM family member 7
Omim ID	606625
Gene Ontology	Hyperlink
Other Designations	19A24 protein CD2-like receptor activating cytotoxic cells OTTHUMP00000025677 novel LY9 (lymphocyte antigen 9) like protein

Disease

- [Genetic Predisposition to Disease](#)
- [Lupus Erythematosus](#)