

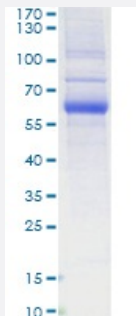
Bioactive

HuPro®

LAG3 (Human) Recombinant Protein

Catalog # P6769 Size 100 ug

Applications



LAG3 (Human) Recombinant Protein (Cat #P6769) was determined by SDS-PAGE with Coomassie Blue, showing a band at 60kDa.

Result of activity analysis

Result of activity analysis

Specification

Product Description	Human LAG3 (NP_002277.4, 23 a.a. - 450 a.a.) partial recombinant protein with His tag at C-terminus expressed in HEK293 cells.
Host	Human
Theoretical MW (kDa)	60
Form	Lyophilized
Preparation Method	Mammalian cell (HEK293) expression system
Purification	Ni-sepharose purification
Purity	> 95% by SDS-PAGE

Endotoxin Level	< 0.1 EU/ug
Activity	Measured by the binding ability in a functional ELISA. Immobilized Recombinant Human LAG3 at 2 ug/mL (100 uL/well) can bind Anti-LAG3 antibody with a linear range of 13-40 ng/mL. Measured by the binding ability in a functional ELISA. Immobilized Human FGL1 at 5 ug/mL (100 uL/well) can bind recombinant Human LAG3, the EC ₅₀ of Human LAG3 is 0.32 ug/mL.
Quality Control Testing	SDS-PAGE Stained with Coomassie Blue LAG3 (Human) Recombinant Protein (Cat #P6769) was determined by SDS-PAGE with Coomassie Blue, showing a band at 60kDa.
Recommend Usage	SDS-PAGE The optimal working dilution should be determined by the end user.
Storage Buffer	Lyophilized from PBS, pH 7.4.
Storage Instruction	Store the lyophilized protein at -20°C to -80°C for long term. After reconstitution to a concentration of 0.1-0.5 mg/mL in sterile distilled water, the protein solution is stable at -20°C for 3 months, at 2-8°C for up to 1 week. Aliquot to avoid repeated freezing and thawing.
Note	Result of activity analysis Result of activity analysis

Applications

- SDS-PAGE

Gene Info — LAG3

Entrez GeneID	3902
Protein Accession#	?P18627-1
Gene Name	LAG3
Gene Alias	CD223
Gene Description	lymphocyte-activation gene 3
Omim ID	153337
Gene Ontology	Hyperlink
Gene Summary	Lymphocyte-activation protein 3 belongs to Ig superfamily and contains 4 extracellular Ig-like domains. The LAG3 gene contains 8 exons. The sequence data, exon/intron organization, and chromosomal localization all indicate a close relationship of LAG3 to CD4. [provided by RefSeq]

Other Designations

lymphocyte-activation protein 3

Disease

- [Asthma](#)
- [Diabetes Mellitus](#)
- [Genetic Predisposition to Disease](#)
- [Hematologic Diseases](#)
- [Hepatitis C](#)
- [Immune System Diseases](#)
- [Multiple Sclerosis](#)
- [Occupational Diseases](#)