

Bioactive

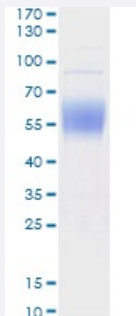
HuPro®

# IL3RA (Human) Recombinant Protein

Catalog # P6767

Size 100 ug

## Applications



IL3RA (Human) Recombinant Protein (Cat #P6767) was determined by SDS-PAGE with Coomassie Blue, showing a band at 145-150kDa.

## Result of activity analysis

Result of activity analysis

## Specification

<b>Product Description</b>	Human IL3RA (NP_002174.1, 20 a.a. - 305 a.a.) partial recombinant protein with His tag at C-terminus expressed in HEK293 cells.
<b>Host</b>	Human
<b>Theoretical MW (kDa)</b>	145-150
<b>Form</b>	Lyophilized
<b>Preparation Method</b>	Mammalian cell (HEK293) expression system
<b>Purification</b>	Ni-sepharose purification
<b>Purity</b>	> 90% by SDS-PAGE

Endotoxin Level	< 0.1 EU/ug
Activity	Measured by the binding ability in a functional ELISA. Immobilized recombinant Human IL3 at 4 ug/mL (100 uL/well) can bind recombinant Human IL3RA, the EC <sub>50</sub> of Human IL3RA is 5.3 ug/mL.
Quality Control Testing	SDS-PAGE Stained with Coomassie Blue IL3RA (Human) Recombinant Protein (Cat #P6767) was determined by SDS-PAGE with Coomassie Blue, showing a band at 145-150kDa.
Recommend Usage	SDS-PAGE The optimal working dilution should be determined by the end user.
Storage Buffer	Lyophilized from PBS, pH 7.4.
Storage Instruction	Store the lyophilized protein at -20°C to -80°C for long term. After reconstitution to a concentration of 0.1-0.5 mg/mL in sterile distilled water, the protein solution is stable at -20°C for 3 months, at 2-8°C for up to 1 week. Aliquot to avoid repeated freezing and thawing.
Note	Result of activity analysis Result of activity analysis

## Applications

- SDS-PAGE

## Gene Info — IL3RA

Entrez GeneID	<a href="#">3563</a>
Protein Accession#	<a href="#">P26951</a>
Gene Name	IL3RA
Gene Alias	CD123, IL3R, IL3RAY, IL3RX, IL3RY, MGC34174, hIL-3Ra
Gene Description	interleukin 3 receptor, alpha (low affinity)
Omim ID	<a href="#">308385 430000</a>
Gene Ontology	<a href="#">Hyperlink</a>

**Gene Summary**

The protein encoded by this gene is an interleukin 3 specific subunit of a heterodimeric cytokine receptor. The receptor is comprised of a ligand specific alpha subunit and a signal transducing beta subunit shared by the receptors for interleukin 3 (IL3), colony stimulating factor 2 (CSF2/GM-CSF), and interleukin 5 (IL5). The binding of this protein to IL3 depends on the beta subunit. The beta subunit is activated by the ligand binding, and is required for the biological activities of IL3. This gene and the gene encoding the colony stimulating factor 2 receptor alpha chain (CSF2RA) form a cytokine receptor gene cluster in a X-Y pseudoautosomal region on chromosomes X or Y. [provided by RefSeq]

**Other Designations**

CD123 antigen|Interleukin-3 receptor|OTTHUMP00000022828|interleukin 3 receptor, alpha

**Pathway**

- [Apoptosis](#)
- [Cytokine-cytokine receptor interaction](#)
- [Hematopoietic cell lineage](#)
- [Jak-STAT signaling pathway](#)

**Disease**

- [Chorioamnionitis](#)
- [Fetal Membranes](#)
- [Genetic Predisposition to Disease](#)
- [Obstetric Labor](#)
- [Pre-Eclampsia](#)
- [Premature Birth](#)
- [Schizophrenia](#)
- [Thyroid Neoplasms](#)