

Bioactive

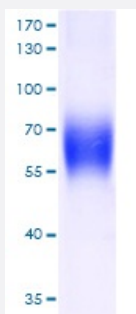
HuPro®

## CD48 (Human) Recombinant Protein

Catalog # P6758

Size 100 ug

### Applications



CD48 (Human) Recombinant Protein (Cat #P6758) was determined by SDS-PAGE with Coomassie Blue, showing a band at 63-73 kDa.

### Result of activity analysis

Result of activity analysis

### Specification

<b>Product Description</b>	Human CD48 (NP_001769.2, 27 a.a. - 220 a.a.) partial recombinant protein with Fc and His tag at C-terminus expressed in HEK293 cells.
<b>Host</b>	Human
<b>Theoretical MW (kDa)</b>	63-73
<b>Form</b>	Lyophilized
<b>Preparation Method</b>	Mammalian cell (HEK293) expression system
<b>Purification</b>	Ni-sepharose purification
<b>Purity</b>	> 97% by SDS-PAGE

Endotoxin Level	< 0.1 EU/ug
Activity	Measured by the binding ability in a functional ELISA. Immobilized Recombinant human CD244 at 5 ug/mL (100 uL/well) can bind Recombinant human CD48 with a linear range of 0.15-0.65 ug/mL.
Quality Control Testing	SDS-PAGE Stained with Coomassie Blue CD48 (Human) Recombinant Protein (Cat #P6758) was determined by SDS-PAGE with Coomassie Blue, showing a band at 63-73 kDa.
Recommend Usage	SDS-PAGE The optimal working dilution should be determined by the end user.
Storage Buffer	Lyophilized from PBS, pH 7.4.
Storage Instruction	Store the lyophilized protein at -20°C to -80°C for long term. After reconstitution to a concentration of 0.1-0.5 mg/mL in sterile distilled water, the protein solution is stable at -20°C for 3 months, at 2-8°C for up to 1 week. Aliquot to avoid repeated freezing and thawing.
Note	Result of activity analysis Result of activity analysis

## Applications

- SDS-PAGE

## Gene Info — CD48

Entrez GeneID	<a href="#">962</a>
Protein Accession#	<a href="#">P09326</a>
Gene Name	CD48
Gene Alias	BCM1, BLAST, BLAST1, MEM-102, SLAMF2, hCD48, mCD48
Gene Description	CD48 molecule
Omim ID	<a href="#">109530</a>
Gene Ontology	<a href="#">Hyperlink</a>

**Gene Summary**

BLAST1 is the designation used for an activation-associated cell surface glycoprotein of 40 to 45 kD expressed primarily in mitogen-stimulated human lymphocytes. The protein sequence predicted by the cDNA encoding BLAST1 indicates that BLAST1 is a member of the immunoglobulin supergene family. Yokoyama (1991) identified the BLAST1 activation/adhesion molecule as CD48.[supplied by OMIM]

**Other Designations**

CD48 antigen (B-cell membrane protein)|OTTHUMP00000025680|OTTHUMP00000060268

**Pathway**

- [Natural killer cell mediated cytotoxicity](#)

**Disease**

- [Adenocarcinoma](#)
- [Cardiovascular Diseases](#)
- [Diabetes Mellitus](#)
- [Edema](#)
- [Esophageal Neoplasms](#)
- [Genetic Predisposition to Disease](#)
- [Schizophrenia](#)