

SARS-CoV-2

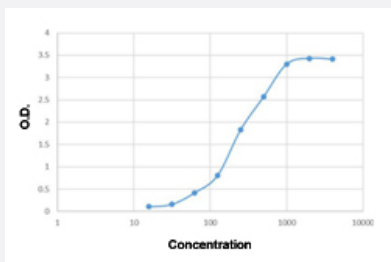
Full-Length

N (SARS-CoV-2) Recombinant Protein

Catalog # P6626

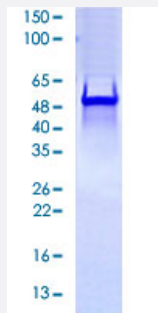
Size 100 ug

Applications



Enzyme-linked Immunoabsorbent Assay

ELISA plate was coated by N protein, 100 uL/well, at various concentrations. The direct ELISA analysis was performed by loading 100 uL per well of a anti C-ter His tag HRP conjugated mAb at a concentration of 1:2000. The plate was incubated for 1 hour at 37°C, then washed 5 time. Detection was performed using TMB substrate for 10 minutes at room temperature in the dark. The plate was stopped with 2 M sulfuric acid. Absorbances were read on a spectrophotometer at 450 nm.



Specification

Product Description	SARS-CoV-2 N (QHD43423.2) full-length recombinant protein with His tag at C-terminal expressed in <i>Escherichia coli</i> .
Host	<i>Escherichia coli</i>
Theoretical MW (kDa)	47.08
Specificity	No non-specific binding to normal human serum was identified so far.
Form	Liquid

Preparation Method	<i>Escherichia coli</i> expression system
Purification	Ni column
Purity	> 95% by SDS-PAGE.
Quality Control Testing	DTT-reducing SDS-PAGE Result
Recommend Usage	Antigen ELISA Western Blot The optimal working dilution should be determined by the end user.
Storage Buffer	In 20 mM Tris, pH 8.5.
Storage Instruction	This protein is not stable at 4°C in liquid. For long term storage store at -20 to -80°C. Aliquot to avoid repeated freezing and thawing.

Applications

- Western Blot

- Enzyme-linked Immunoabsorbent Assay

ELISA plate was coated by N protein, 100 uL/well, at various concentrations. The direct ELISA analysis was performed by loading 100 uL per well of a anti C-ter His tag HRP conjugated mAb at a concentration of 1:2000. The plate was incubated for 1 hour at 37°C, then washed 5 time. Detection was performed using TMB substrate for 10 minutes at room temperature in the dark. The plate was stopped with 2 M sulfuric acid. Absorbances were read on a spectrophotometer at 450 nm.

- SDS-PAGE