

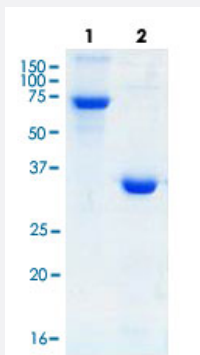
Full-Length

SCYE1 (Human) recombinant protein

Catalog # P5934

Size 50 ug

Applications



Loading 2 ug protein in SDS-PAGE: Lane1: BSA, Lane2: SCYE1.

Specification

Product Description	Human SCYE1 full-length/partial recombinant protein with no tag expressed in <i>Escherichia coli</i> .
Host	Escherichia coli
Theoretical MW (kDa)	35
Form	Liquid
Preparation Method	<i>Escherichia coli</i> expression system
Purification	Multi-step chromatography.
Concentration	0.50 mg/ml
Purity	98.15%
Quality Control Testing	SDS-PAGE Stained with Coomassie Blue Loading 2 ug protein in SDS-PAGE: Lane1: BSA, Lane2: SCYE1.

Recommend Usage	SDS-PAGE Western blot ELISA Antibody production Protein Array Activity assay The optimal working dilution should be determined by the end user.
------------------------	---

Storage Buffer	In PBS, pH 7.4
-----------------------	----------------

Storage Instruction	Store at -80°C. Aliquot to avoid repeated freezing and thawing.
----------------------------	--

Applications

- Western Blot
- Enzyme-linked Immunoabsorbent Assay
- Functional Study
- SDS-PAGE

Gene Info — SCYE1

Entrez GeneID	9255
Gene Name	SCYE1
Gene Alias	AIMP1, EMAP2, EMAPII, p43
Gene Description	small inducible cytokine subfamily E, member 1 (endothelial monocyte-activating)
Omim ID	603605
Gene Ontology	Hyperlink

Gene Summary	The protein encoded by this gene is a cytokine that is specifically induced by apoptosis, and it is involved in the control of angiogenesis, inflammation, and wound healing. The release of this cytokine renders the tumor-associated vasculature sensitive to tumor necrosis factor. The precursor protein is identical to the p43 subunit, which is associated with the multi-tRNA synthetase complex, and it modulates aminoacylation activity of tRNA synthetase in normal cells. This protein is also involved in the stimulation of inflammatory responses after proteolytic cleavage in tumor cells. Multiple transcript variants encoding different isoforms have been found for this gene. A pseudogene has been identified on chromosome 20. [provided by RefSeq]
---------------------	---

Other Designations

ARS-interacting multifunctional protein 1|OTTHUMP00000161878|endothelial monocyte-activating polypeptide 2|endothelial-monocyte activating polypeptide II|multisynthetase complex auxiliary component p43|small inducible cytokine subfamily E, member 1

Disease

- [Alcoholism](#)
- [Genetic Predisposition to Disease](#)