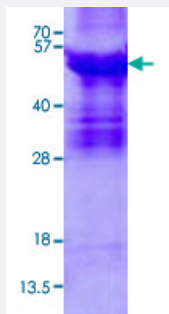


Full-Length

# ABI3 (Human) Recombinant Protein

Catalog # P5871      Size 20 ug

## Applications



## Specification

<b>Product Description</b>	Human ABI3 (NP_057512, 1 a.a. - 366 a.a. ) full-length recombinant protein with His tag expressed in <i>Escherichia coli</i> .
<b>Sequence</b>	MGSSHHHHHHSSGLVPRGSHMGMAELQQLQEF EIPTGREALRGNHSALLRVADYCEDNYVQA TDKRKALEETMAFTTQALASVAYQVGNLAGHTLRMLDLQGAALRQVEARVSTLGQMVNMHMEK VARREIGTLATVQRLPPGQKVIAPENLPPLTPYCRRLNFGCLDDIGHGKDLSTQLSRTGTL SRKSI KAPATPASATLGRPPRIPEPVHLPVVPDGRLSAASSASSLASAGSAEGVGGAPTPKGQAAPPAP PLPSSLDPPPPPAAVEVFQRPPTLEELSPPPPDEELPLPLDLPPPPPLDGDELGLPPPPPGFGP DEPSWVPASYLEKVVTLPYTSQKDNELSFSEGTVICVTRRYS DGWCEGVSSEGTGFFPGNYVE PSC
<b>Host</b>	<i>Escherichia coli</i>
<b>Theoretical MW (kDa)</b>	41.4
<b>Form</b>	Liquid
<b>Preparation Method</b>	<i>Escherichia coli</i> expression system
<b>Purity</b>	> 85% by SDS - PAGE
<b>Quality Control Testing</b>	3 ug/lane in 15% SDS-PAGE Stained with Coomassie Blue. Due to the protein nature, dimmers and multimers may be observed.

**Storage Buffer**

In 20 mM Tris-HCl buffer, pH 8.0 (0.4 M Urea, 10% glycerol).

**Storage Instruction**

Store at 2°C to 8°C for 1 week. For long term storage, aliquot and store at -20°C to -80°C.  
Aliquot to avoid repeated freezing and thawing.

## Applications

- SDS-PAGE

## Gene Info — ABI3

**Entrez GeneID**[51225](#)**Gene Name**

ABI3

**Gene Alias**

NESH, SSH3BP3

**Gene Description**

ABI family, member 3

**Omim ID**[606363](#)**Gene Ontology**[Hyperlink](#)**Gene Summary**

This gene encodes a member of an adaptor protein family. Members of this family encode proteins containing a homeobox homology domain, proline rich region and Src-homology 3 (SH3) domain, and are components of the Abi/WAVE complex which regulates Rac-dependent actin polymerization. The encoded protein inhibits ectopic metastasis of tumor cells as well as cell migration. This may be accomplished through interaction with p21-activated kinase. [provided by RefSeq]

**Other Designations**

ABI gene family, member 3|NESH protein|new molecule including SH3