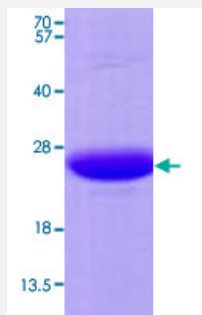


CREG1 (Human) Recombinant Protein

Catalog # P5861 Size 100 ug

Applications



Specification

Product Description	Human CREG1 (NP_003842, 32 a.a. - 220 a.a.) partial recombinant protein with His tag expressed in <i>Escherichia coli</i> .
Sequence	MGSSHHHHHHSSGLVPRGSHMGSMRGGRDHGDWDEASRLPPLPPREDAARVARFVTHVSDW GALATISTLEAVRGRPFADVLSLSDGPPGAGSGVPYFYLSPLQLSVSNLQENPYATLTMTLAQTNF CKKHGFDPQSPLCVHIMLSGTVTKVNETEMDIKHSLEFIRHPEMKTWPSSHNWFFAKLNITNWVL DYFGGPKMTPPEEYNNVTQ
Host	<i>Escherichia coli</i>
Theoretical MW (kDa)	23.6
Form	Liquid
Preparation Method	<i>Escherichia coli</i> expression system
Purity	> 95% by SDS - PAGE
Quality Control Testing	3 ug/lane in 15% SDS-PAGE Stained with Coomassie Blue. Due to the protein nature, dimmers and multimers may be observed.
Storage Buffer	In 20 mM Tris-HCl buffer, 0.15 M NaCl, pH 8.0 (10% glycerol).
Storage Instruction	Store at 2°C to 8°C for 1 week. For long term storage, aliquot and store at -20°C to -80°C. Aliquot to avoid repeated freezing and thawing.

Applications

- SDS-PAGE

Gene Info — CREG1

Entrez GeneID	8804
Gene Name	CREG1
Gene Alias	CREG
Gene Description	cellular repressor of E1A-stimulated genes 1
Gene Ontology	Hyperlink
Gene Summary	<p>The adenovirus E1A protein both activates and represses gene expression to promote cellular proliferation and inhibit differentiation. The protein encoded by this gene antagonizes transcriptional activation and cellular transformation by E1A. This protein shares limited sequence similarity with E1A and binds both the general transcription factor TBP and the tumor suppressor pRb in vitro. This gene may contribute to the transcriptional control of cell growth and differentiation. [provided by RefSeq]</p>
Other Designations	OTTHUMP00000032606 cellular repressor of E1A-stimulated genes