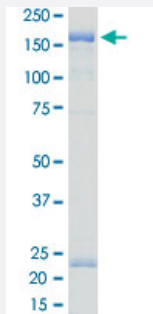


Bioactive

ABL2 (d53-73) (Human) Recombinant Protein

Catalog # P5784 Size 5 ug

Applications



Result of activity analysis

Result of activity analysis

Specification

Product Description	Human ABL2 (NP_009298.1, 2 a.a. - 1182 a.a.) amino acids 53-73 deleted partial recombinant protein with GST tag expressed in Baculovirus infected Sf21 cells.
Host	insect
Theoretical MW (kDa)	153
Form	Liquid
Preparation Method	Baculovirus infected insect cell (Sf21) expression system
Purification	Glutathione sepharose chromatography
Purity	63 % by SDS-PAGE/CBB staining

Activity	The activity was measured by off-chip mobility shift assay. The enzyme was incubated with fluorescence-labeled substrate and Mg (or Mn)/ATP. The phosphorylated and unphosphorylated substrates were separated and detected by LabChip™3000. Substrate : ABLtide. ATP: 100 µM.
Quality Control Testing	SDS-PAGE Stained with Coomassie Blue
Storage Buffer	In 50 mM Tris-HCl, 150 mM NaCl, pH 7.5 (0.05% Brij35, 1 mM DTT, 10% glycerol)
Storage Instruction	Store at -80°C. Aliquot to avoid repeated freezing and thawing.
Note	Result of activity analysis Result of activity analysis

Applications

- Functional Study
- SDS-PAGE

Gene Info — ABL2

Entrez GeneID	27
Protein Accession#	NP_009298.1
Gene Name	ABL2
Gene Alias	ABLL, ARG, FLJ22224, FLJ31718, FLJ41441
Gene Description	v-abl Abelson murine leukemia viral oncogene homolog 2 (arg, Abelson-related gene)
Omim ID	164690
Gene Ontology	Hyperlink
Gene Summary	This gene encodes a member of the Abelson family of nonreceptor tyrosine protein kinase. The protein is highly similar to the ABL1 protein, including the tyrosine kinase, SH2 and SH3 domains, and has a role in cytoskeletal rearrangements by its C-terminal F-actin- and microtubule-binding sequences. This gene is expressed in both normal and tumor cells, and is involved in translocation with the ETV6 gene in leukemia. Multiple alternatively spliced transcript variants encoding different protein isoforms have been found for this gene. [provided by RefSeq]
Other Designations	Abelson murine leukemia viral (v-abl) oncogene homolog 2 Abelson-related gene protein OTTHU MP00000033139 arg tyrosine kinase v-abl Abelson murine leukemia viral oncogene homolog 2

Pathway

- [ErbB signaling pathway](#)

Disease

- [Alzheimer disease](#)
- [Cardiovascular Diseases](#)
- [Diabetes Complications](#)
- [Diabetes Mellitus](#)
- [Edema](#)
- [Metabolic Syndrome X](#)
- [Neoplasms](#)
- [Osteoporosis](#)