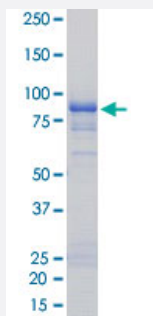


Bioactive

ALK (R1275Q) (Human) Recombinant Protein

Catalog # P5747 Size 5 ug

Applications



Result of activity analysis

Result of activity analysis

Specification

Product Description	Human ALK (BAG10812.1, 1058 a.a. - 1620 a.a.) R1275Q mutant partial recombinant protein with G ST tag expressed in Baculovirus infected Sf21 cells.
Host	insect
Theoretical MW (kDa)	90
Form	Liquid
Preparation Method	Baculovirus infected insect cell (Sf21) expression system
Purification	Glutathione sepharose chromatography
Purity	66 % by SDS-PAGE/CBB staining

Activity	The activity was measured by off-chip mobility shift assay. The enzyme was incubated with fluorescence-labeled substrate and Mg (or Mn)/ATP. The phosphorylated and unphosphorylated substrates were separated and detected by LabChip™3000. Substrate : Src tide. ATP: 100 μM.
Quality Control Testing	SDS-PAGE Stained with Coomassie Blue
Storage Buffer	In 50 mM Tris-HCl, 150 mM NaCl, pH 7.5 (0.05% Brij35, 1 mM DTT, 10% glycerol)
Storage Instruction	Store at -80°C. Aliquot to avoid repeated freezing and thawing.
Note	Result of activity analysis Result of activity analysis

Applications

- Functional Study
- SDS-PAGE

Gene Info — ALK

Entrez GeneID	238
Protein Accession#	BAG10812.1
Gene Name	ALK
Gene Alias	CD246, Ki-1, TFG/ALK
Gene Description	anaplastic lymphoma receptor tyrosine kinase
Omim ID	105590
Gene Ontology	Hyperlink

Gene Summary

The 2;5 chromosomal translocation is frequently associated with anaplastic large cell lymphomas (ALCLs). The translocation creates a fusion gene consisting of the ALK (anaplastic lymphoma kinase) gene and the nucleophosmin (NPM) gene: the 3' half of ALK, derived from chromosome 2, is fused to the 5' portion of NPM from chromosome 5. A recent study shows that the product of the NPM-ALK fusion gene is oncogenic. The deduced amino acid sequences reveal that ALK is a novel receptor protein-tyrosine kinase having a putative transmembrane domain and an extracellular domain. These sequences are absent in the product of the transforming NPM-ALK gene. ALK shows the greatest sequence similarity to LTK (leukocyte tyrosine kinase). ALK plays an important role in the development of the brain and exerts its effects on specific neurons in the nervous system. [provided by RefSeq]

Other Designations

ALK tyrosine kinase receptor|CD246 antigen|anaplastic lymphoma kinase (Ki-1)|anaplastic lymphoma kinase Ki-1

Disease

- [Adenocarcinoma](#)
- [Carcinoma](#)
- [Genetic Predisposition to Disease](#)
- [Kidney Failure](#)
- [Lung Neoplasms](#)
- [Multiple Sclerosis](#)
- [Schizophrenia](#)
- [Tobacco Use Disorder](#)